

10 Years of
SHU Success:
A Promising
Approach for
Conserving
Alabama's
Water and
Wildlife



Rebecca Bearden, Stuart McGregor,
Pat O'Neil, Anne Wynn
Geological Survey of Alabama
Jeff Powell, Jennifer Grunewald, Drew Rollman
United States Fish and Wildlife Service



ABOUT US

RIVERS AND CRITTERS

RESOURCES

HOW TO GET INVOLVED

ALABAMA RIVERS AND STREAMS NETWORK

ABOUT US

Who we are



What we do



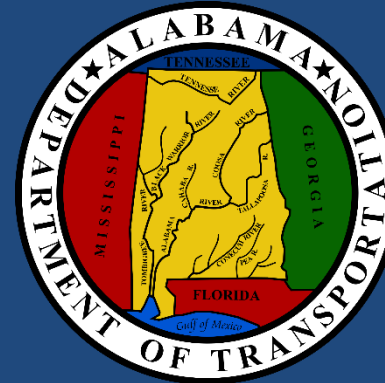
Where we work



Why we do it

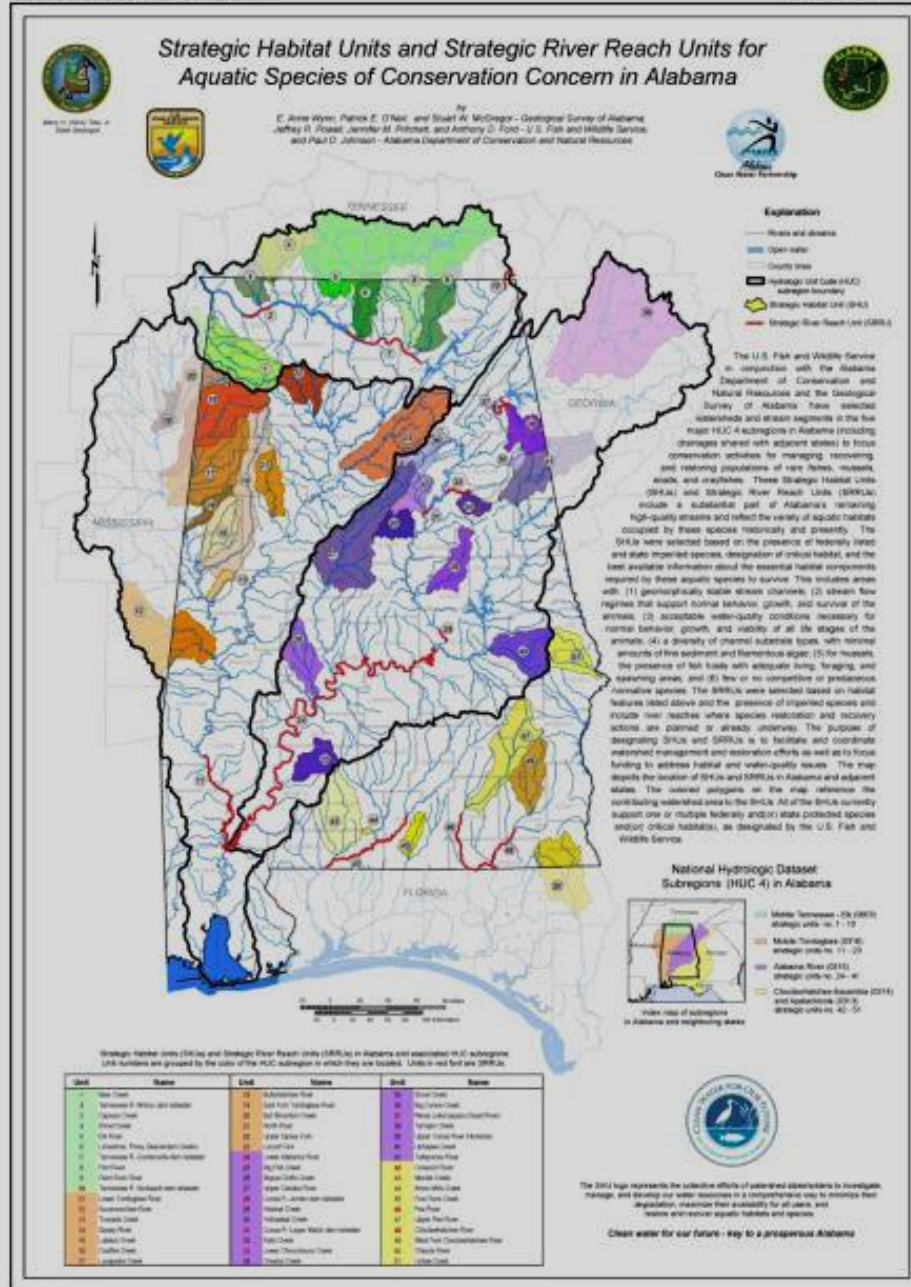


Alabama
Water
Watch

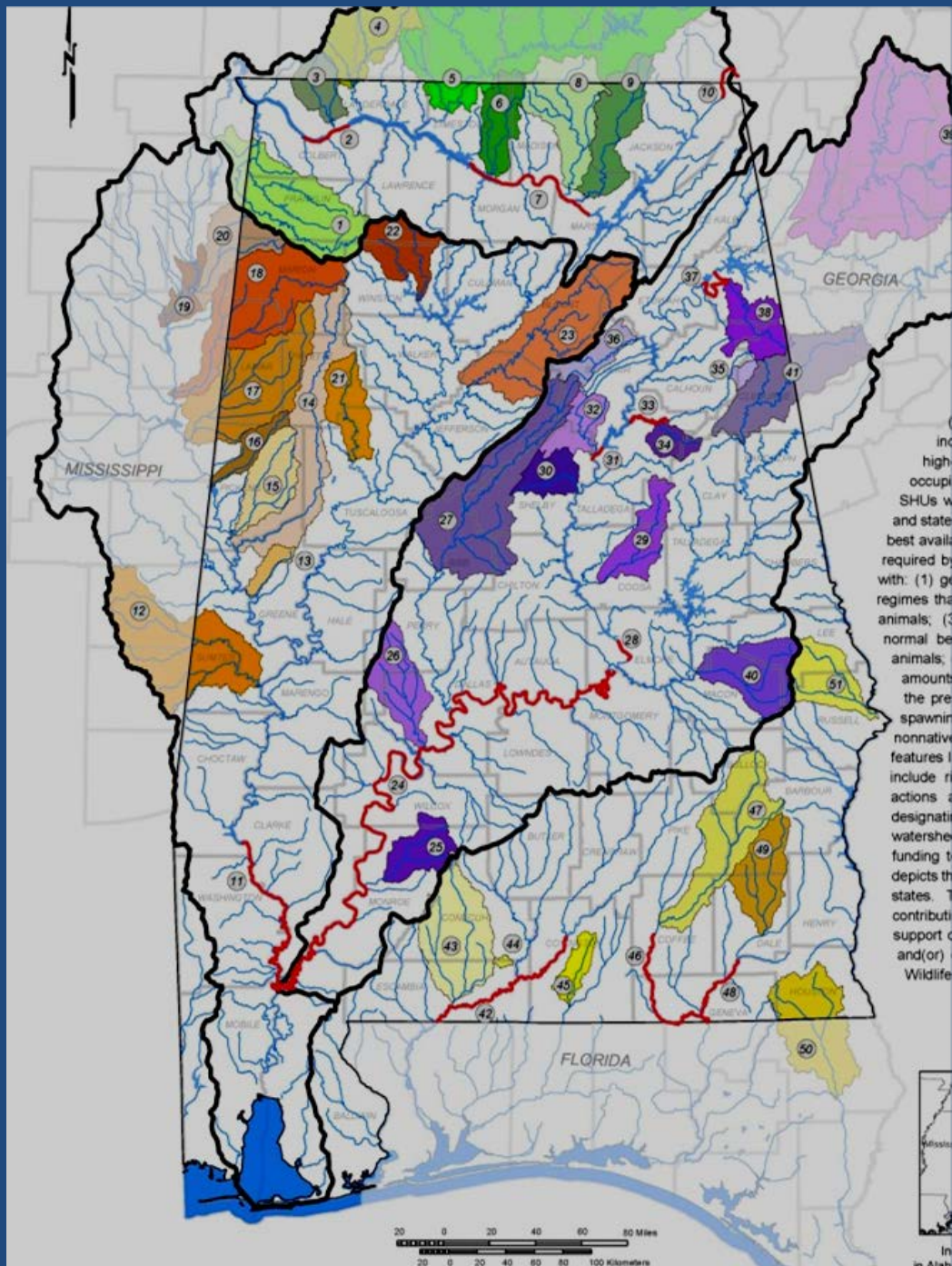


Strategic Habitat Units (SHU)

- ❖ Priority watersheds
- ❖ Guide recovery efforts
- ❖ Filter for workload
- ❖ Focuses efforts



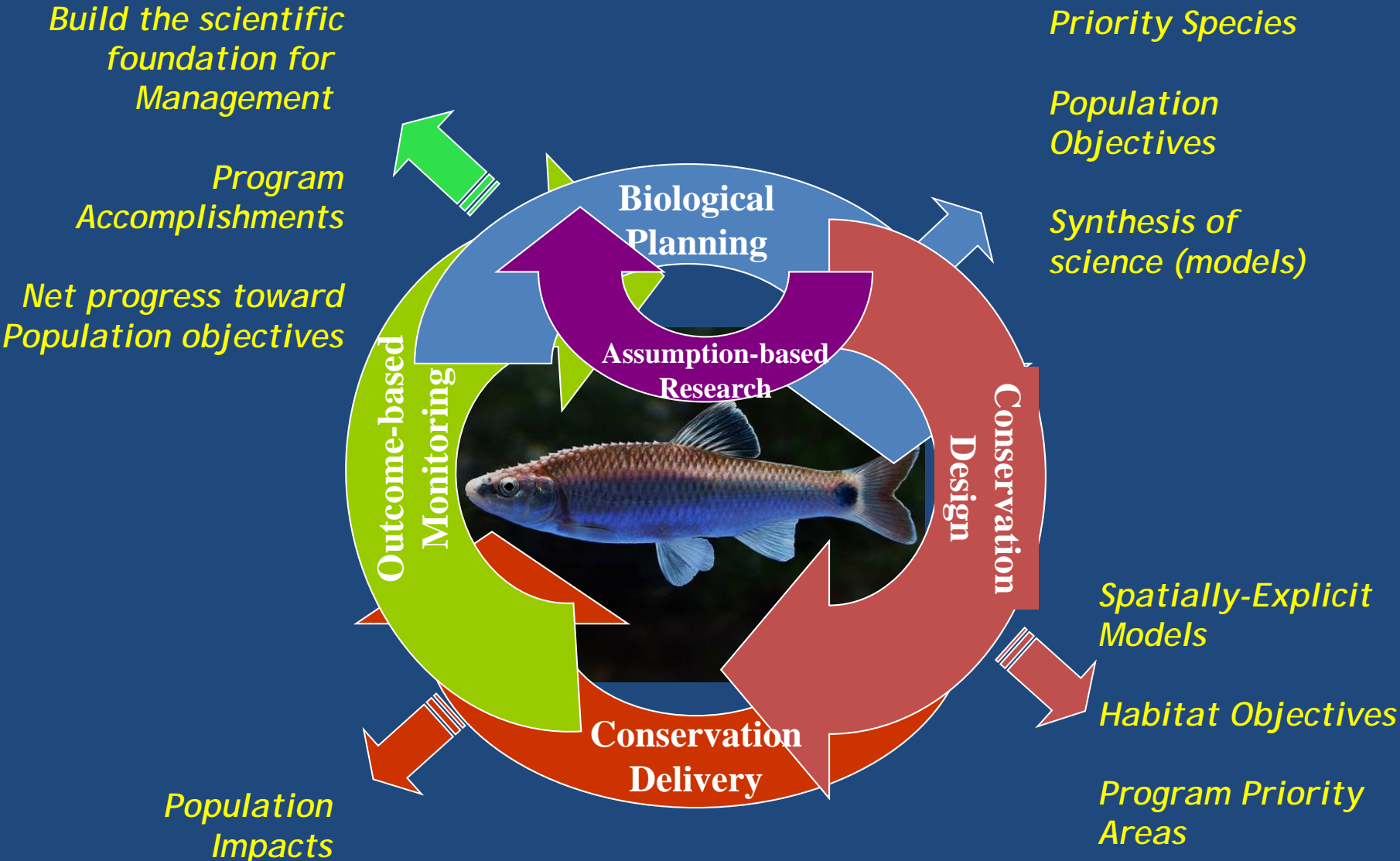
1. Assess
2. Restore
3. Recover
4. Monitor



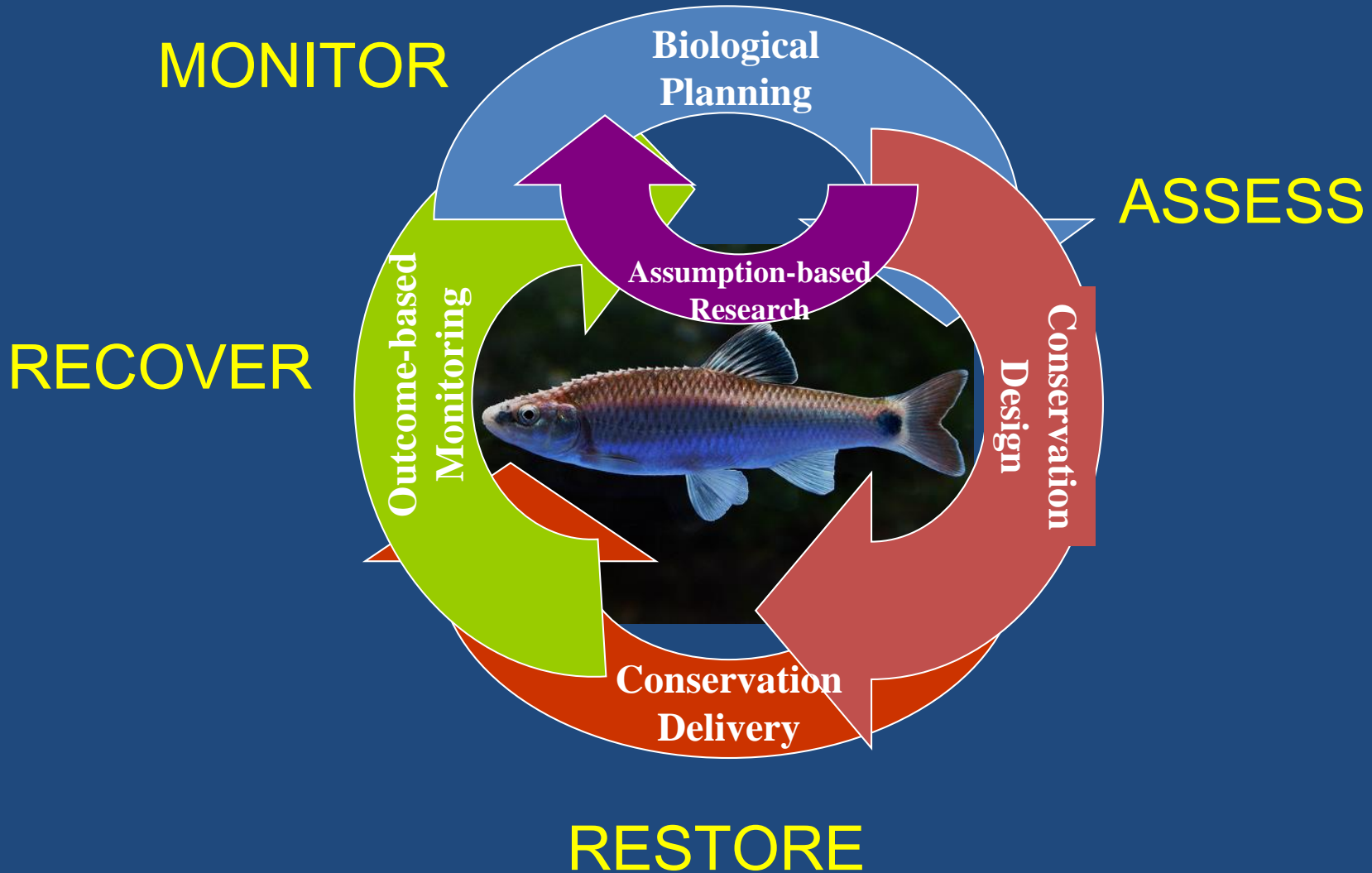
inc
high
occup
SHUs w
and state
best avail
required by
with: (1) ge
regimes tha
animals; (3)
normal be
animals;
amount
the pre
spawnin
nonnative
features l
include r
actions a
designate
watershe
funding t
depicts th
states. T
contribute
support o
and(or)
Wildlife



Strategic Habitat Conservation



The SHC framework supports the SHU process



Key Accomplishments

2,000 Stream Crossings

- Bear Creek = 625
- Big Canoe Creek = 550
- North River = 75
- Murder Creek = 50
- Choccolocco Creek = 700

291 Fish IBIs

- Bear Creek = 32
- Big Canoe Creek = 27
- Choc/Pea/Yellow Rivers = 30
- Murder Creek = 24
- Sipsev River = 26
- Buttahatchee/Lux Rivers = 96
- Terrapin Creek = 56

3 Dam Removals

- Big Canoe Creek = 1
- Locust Fork = 1
- Cahaba River = 1

Sediment Reduction in North River

- 445 tons

Mollusk Reintroductions

- Reintroductions of 18 species

Precluded the need to List

- 5 crayfish species

Down-listings

- 1 gastropod



P. langniappe - Susan Adams

AABC 2010 - 2015 Mollusk Reintroductions:

Tennessee Basin:



Alabama Lampmussel - E
 Paint Rock – lower – 3,197
 Bear Creek – 4,572
 Elk River, TN – 4,462
 Sequatchie River, TN – 1,800

Cumberland Bean - E
 Paint Rock – 378

Pale Lilliput - E
 Duck River, TN – 1,602
 Paint Rock – 1,200

Rabbitsfoot - T
 Limestone Creek - 270
Painted Creekshell
 Limestone Creek – 430

Oyster Mussel – E
 Paint Rock – 1,007

Cumberland Moccasinshell
 Bear Creek - 185

Coosa Basin:



Alabama Rainbow
 Choccolocco Creek – 7,362
 Coosa River – 2,000
 Little River – 2,000

Southern Rainbow
 Little River - 183

Fine-lined Pocketbook - T
 Little River - 184

Interrupted Rocksnail – E
 Weiss Bypass - 2,034

Alabama Creekmussel
 Choccolocco Creek – 303
 Coosa River – 250
 Little River – 250

Cahaba Basin:



Southern Combshell - E
 Cahaba River - 287

Coosa Moccasinshell - E
 Little Cahaba River - 59

Spotted Rocksnail
 Cahaba River – 42,146

Oblong Rocksnail
 Little Cahaba River – 3,768

Alabama Basin:



Orangenacre Mucket - T
 Tallatchee Creek - 330



Warrior Basin:

Plicate Rocksnail - E
 Locust Fork – 14,481

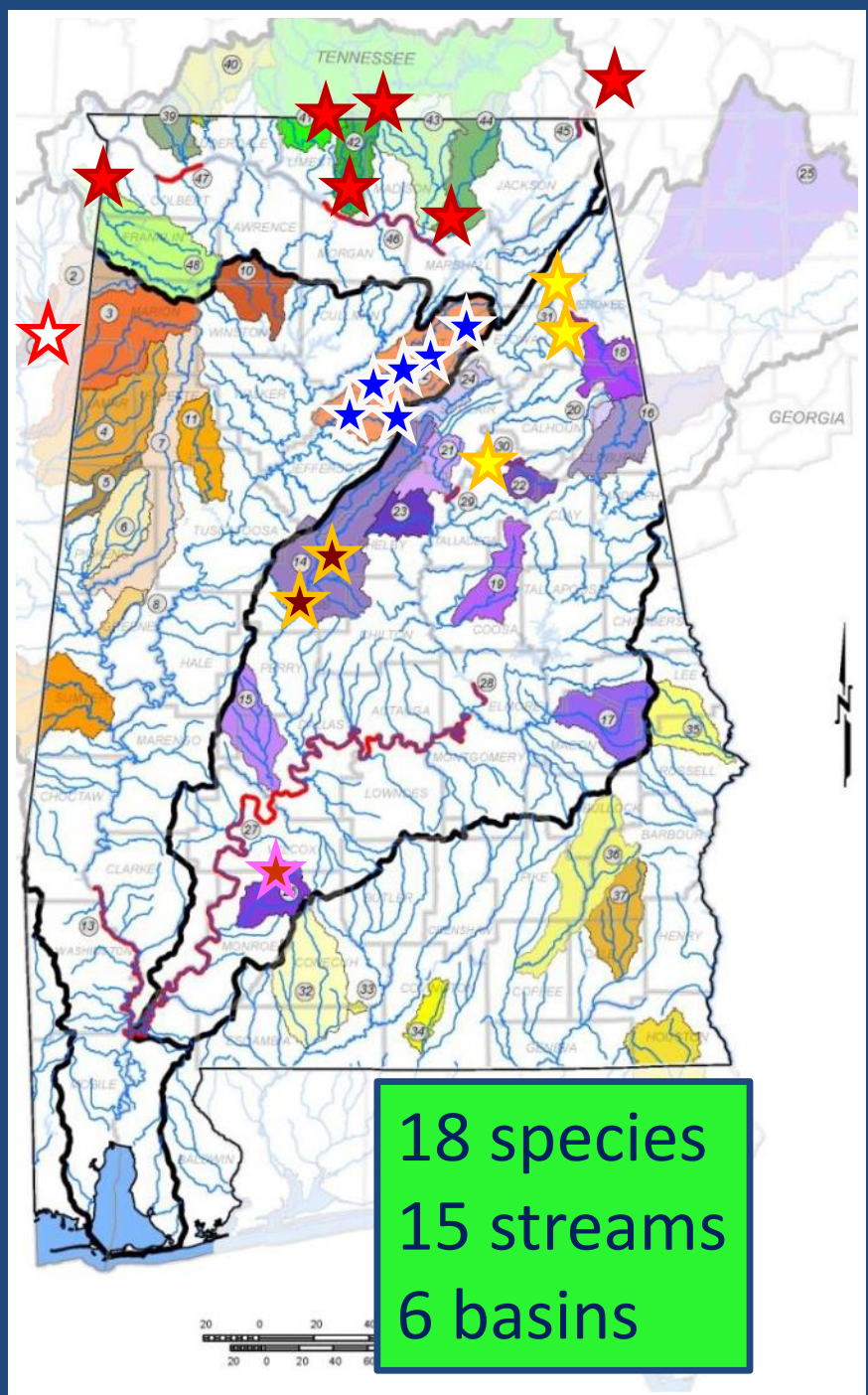
Tombigbee Basin:



Southern Combshell - E
 Bull Mountain Creek, MS - 205

Orangenacre Mucket - T
 Locust Fork – 2,062

Alabama Rainbow
 Locust Fork – 15,100



Success looks like this...

Restoring habitat

Reintroductions



Precluding the need to list

Delisting / Downlisting species
from the ESA





- In 2010 and 2012, the USFWS Alabama Field Office funded 2 studies to assess the populations of 6 crayfishes from the CBD mega-petition list found in AL (MS FO funded an assessment on 3 that occur in MS).
- Based on published reports and preliminary results from ongoing surveys, CBD has dropped 5 of the 6 crayfishes from further listing consideration.
- Combined, the 2 studies cost \$50,000.
- Tens of thousands of listing dollars are saved by this early action.
- Work accomplished through existing SHU partnerships



Photo credits to Dr. Guenter Schuster (Eastern Kentucky University - retired)

Outreach and Education



Current Surveys



Leptoxis foremani - Interrupted Rocksnail
Oostanaula River, Georgia
Alabama Aquatic Biodiversity Center
Alabama Department of Conservation and Natural Resources



Scheduled Dam Removals



Program Expansion



Landowner Assistance



SHU Mapper

SHU - Map
https://nwrwebapps2.cr.usgs.gov/AL/Map

USGS
Science for a changing world

USGS Home
Contact USGS
Search USGS

Alabama Rivers and Streams Network SHU Mapper

Layers

- SHUs & SRRUs
- Streams
- Crossings Surveyed
- Crossings Not Surveyed

Options

- Sediment Risk Index
- Culvert Outfall

Legend

Sediment Risk Index

- ▲ High Risk
- Moderate Risk
- Low Risk
- ◇ Full Survey Not Performed
- Not Surveyed

Culvert Outfall

- No outfall
- 1 in. - 6 in.

100km / 60mi

Funding and support for the Watershed Boundary Dataset (WBD) were provided by the Natural Resources Conservation Service...

Accessibility FOIA Privacy Policies and Notices

U.S. Department of the Interior | U.S. Geological Survey
URL: <https://nwrwebapps2.cr.usgs.gov/AL/Map>
Data Questions: Jennifer Grunewald, 251-441-6633
Application Questions: Craig Conzelmann, 337-266-8842
Page Last Modified: Friday, August 05, 2016

USA.gov



Alabama Rivers and Streams Network

@alabamariversandstream
snetwork

- Home
- About
- Photos
- Events
- Likes
- Videos
- Posts
- Manage Tabs
- Promote



Like Follow Message More

+ Add a Button

Status Photo / Video Offer, Event +

Write something...

This Week See All

783 ↑ Post Reach	0 Website Clicks	52 ↑ Post Engagement
---------------------	---------------------	-------------------------

Boost Your Page for \$5
Reach even more people in United States

Promote Page

Alabama Rivers and Streams Network
Published by Rebecca Bearden [?] · August 5 at 9:48pm ·

Congratulations to Dr. Pat O'Neil, Deputy Director of the Geological Survey of Alabama, and recipient of the 2016 Water Conservationist of the Year Award, presented by the Alabama Wildlife Federation as part of the

Non-Profit Organization

Search for posts on this Page

0% response rate, day or more to respond
Respond faster to turn on the badge

617 likes +5 this week
Robb Herrington and 122 other friends

783 post reach this week

See Pages Feed
Posts from Pages you've liked as your Page

Create an Event for Your Page
Events are a way to organize gatherings and bring people together.

Invite friends to like this Page

ABOUT

Add street address Save

Questions?

