

# Alabama's Drought Planning

## *Policy Moving Forward*

Tom Littlepage  
Alabama Office of Water Resources

September 10, 2015



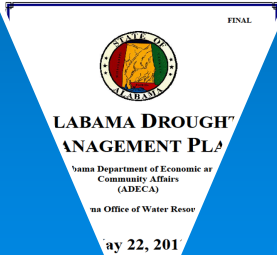
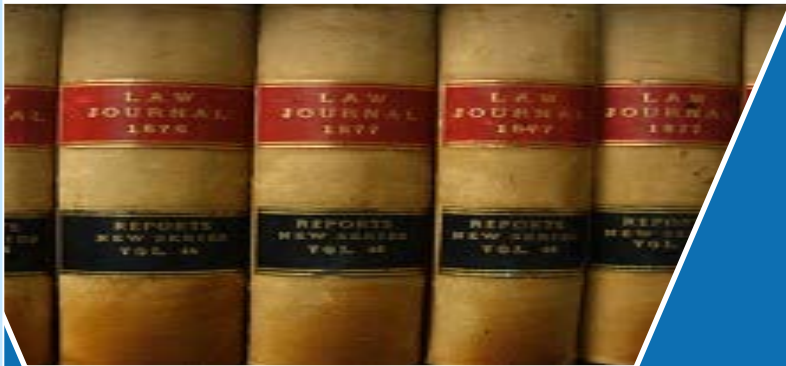
# Drought Response Concept



- Intent is to build a flexible process that can be easily integrated into any water management enhancements

# Alabama Drought Management Approach

Level of Procedural Detail



- Drought Act provides broad overview of drought management policies, priorities, structures, processes, and agency responsibilities
- Drought regulations provide more detailed information on specific procedures and responsibilities for drought reporting and publication of Alabama Drought Plan
- Alabama Drought Plan provides specific criteria on drought declarations, drought reporting information and format, and meeting procedures

# Alabama Drought Planning & Response Act (2014 – 400)

ACT #2014-400

1 HB49  
2 15/214 E  
3 By Representatives Boothe and McCampbell  
4 RFD: Agriculture and Forestry  
5 First Read: 14-JAN-14  
6 DFD: 11/18/2013



- Signed on April 9, 2014
- Codified in Code of Alabama as § § 9-10C-1, et seq.

## Legislative Acts Details

ACT NUMBER 2014 - 400	
Bill Number	H - 49
Session Type	Regular
Category	General
Author	BOOTHE
Subject: Who	AL DROUGHT ASSESS TEAM
Subject: What	CODIFY ESTABLISHMENT OF
Subject: Where	STATE OF AL
Description	Codify establishment of the AL Drought Assessment and Planning Team created by Exec Order # 19
Signed by Governor	Yes
Approved Date and Time	4-9-2014 1:02 PM
Received Date and Time	4-9-2014 4:14 PM



# Basic Provisions

- Primary Focus:  
Communications and Coordination
- Components:
  - Structure
  - Process
  - US Drought Monitor Input
  - Alabama Drought Declaration
  - Data Availability and Analysis
  - Education and Outreach

# Basic Provisions

- Primary Focus:  
Communications and Coordination
- Components:
  - **Structure**
  - Process
  - US Drought Monitor Input
  - Alabama Drought Declaration
  - Data Availability and Analysis
  - Education and Outreach

# Alabama Drought Planning Structure

## Alabama Drought Assessment and Planning Team (ADAPT)

- Senior advisory body to the Governor and OWR
- Composed of key state and federal agencies and Governor's appointees
- Receive inputs from OWR, MIG, and others
- Focal point for coordination of governmental drought responses



## Monitoring and Impact Group (MIG)

- Develop triggers and indicators of drought
- Collect climatic, meteorological, stream flow, groundwater, reservoir, soil moisture, and impact data
- Perform data analysis
- Make recommendations based on data analysis
- Assess the potential and real impacts of drought
- Develop mitigation recommendations

# ADAPT Membership

- Brian Atkins, OWR Division Chief, Chair
- Art Faulkner, AEMA Director
- Lance LeFleur, ADEM Director
- Major General Perry Smith, Alabama Adjutant General
- Gunter Guy, DCNR Commissioner
- John McMillian, AGI Commissioner
- Greg Pate, Alabama State Forester
- Dr. Nick Tew, State Geologist of Alabama
- Dr. John Christy, State Climatologist of Alabama
- Charles Stover, MIG Chair
- Ms. Barbara Gibson, Choctawhatchee Pea and Yellow Rivers Watershed Management Authority Representative
- Dr. Bill Puckett, SWCC Exec Director
- Kurt Simon, Acting Alabama State Conservationist, USDA NRCS
- Roy McAuley, Governor Appointee
- Chris Issacson, Governor Appointee
- Matt Durdin, Governor Appointee

# MIG Organizational Representation

➤ Charles Stover, Chair

➤ State Agencies:

- OWR
- ADEM
- DCNR
- GSA
- State Climatologist
- Ag and Industries
- AEMA
- Forestry Commission

➤ Ala Water Resources Commission

➤ Montgomery Water Works

➤ Birmingham Water Works

➤ Federal Agencies:

- NOAA
- National Weather Service
- USGS
- USDA NASS
- Corps of Engineers
- TVA

➤ Manufacture Ala / Pulp & Paper Council

➤ AU Water Resources Center

**All meetings open to press and public**

# Basic Provisions

- Primary Focus:  
Communications and Coordination
- Components:
  - Structure
  - **Process**
  - US Drought Monitor Input
  - Alabama Drought Declaration
  - Data Availability and Analysis
  - Education and Outreach



## NEW

ALABAMA DEPARTMENT OF ECONOMIC AND COMMUNITY AFFAIRS  
OFFICE OF WATER RESOURCES  
Chapter 305-7-13

## DROUGHT PLANNING AND RESPONSE

## TABLE OF CONTENTS

305-7-13.01	Purpose
305-7-13.02	Applicability
305-7-13.03	Definitions
305-7-13.04	State Drought Plan
305-7-13.05	Organization and Operation of ADAPT
305-7-13.06	Drought Declarations
305-7-13.07	Community Public Water System Drought Conservation Plans
305-7-13.08	Reporting of Voluntary or Mandatory Restrictions or Reductions by Community Public Water Systems
305-7-13.09	Rulemaking Authority

**305-7-13.01 Purpose.** The purpose of this chapter is to provide procedures for the organization of the Alabama Drought Assessment and Planning Team (ADAPT), the publication of a State Drought Plan, the contents of community public water system drought conservation plans, procedures for reporting voluntary and mandatory restrictions or reductions by community public water systems to OWR, procedures for the issuance of Drought Declarations by OWR, and for rulemaking.

**Author:** Tom Littlepage.

**Statutory Authority:** Code of Ala. 1975, §§9-10C-1 et seq.

**History:** New Rule: Filed: xxx xx, 2015; Effective Date: xxx xx, 2015.

**305-7-13.02 Applicability.** These regulations are applicable to all community public water systems. They require all community public water systems to develop and provide a drought conservation plan and report required drought response activities as outlined in that plan in accordance with the requirements of this chapter.

**Author:** Tom Littlepage.

**Statutory Authority:** Code of Ala. 1975, §§9-10C-1 et seq.

**History:** New Rule: Filed: xxx xx, 2015; Effective Date: xxx xx, 2015.

# Drought Planning and Response Regulations

# Draft Regulations Focus Areas

- State drought plan criteria
- ADAPT/MIG operating procedures
- State drought declaration process
- Establishes requirement for drought conservation plan but allows for use of existing plans if they address drought response
- Establishes reporting requirements for public water systems

# Outline of Draft Regulations

- 305-7-13.01 Purpose
- 305-7-13.02 Applicability
- 305-7-13.03 Definitions
- 305-7-13.05 Alabama State Drought Plan
- 305-7-13.04 Organization and Operation of ADAPT
- 305-7-13.08 Drought Declarations
- 305-7-13.06 Community Public Water System Drought Conservation Plans
- 305-7-13.07 Reporting of Voluntary or Mandatory Restrictions or Reductions by Community Public Water Systems
- 305-7-13.09 Rulemaking Authority

# Drought Regulations Process

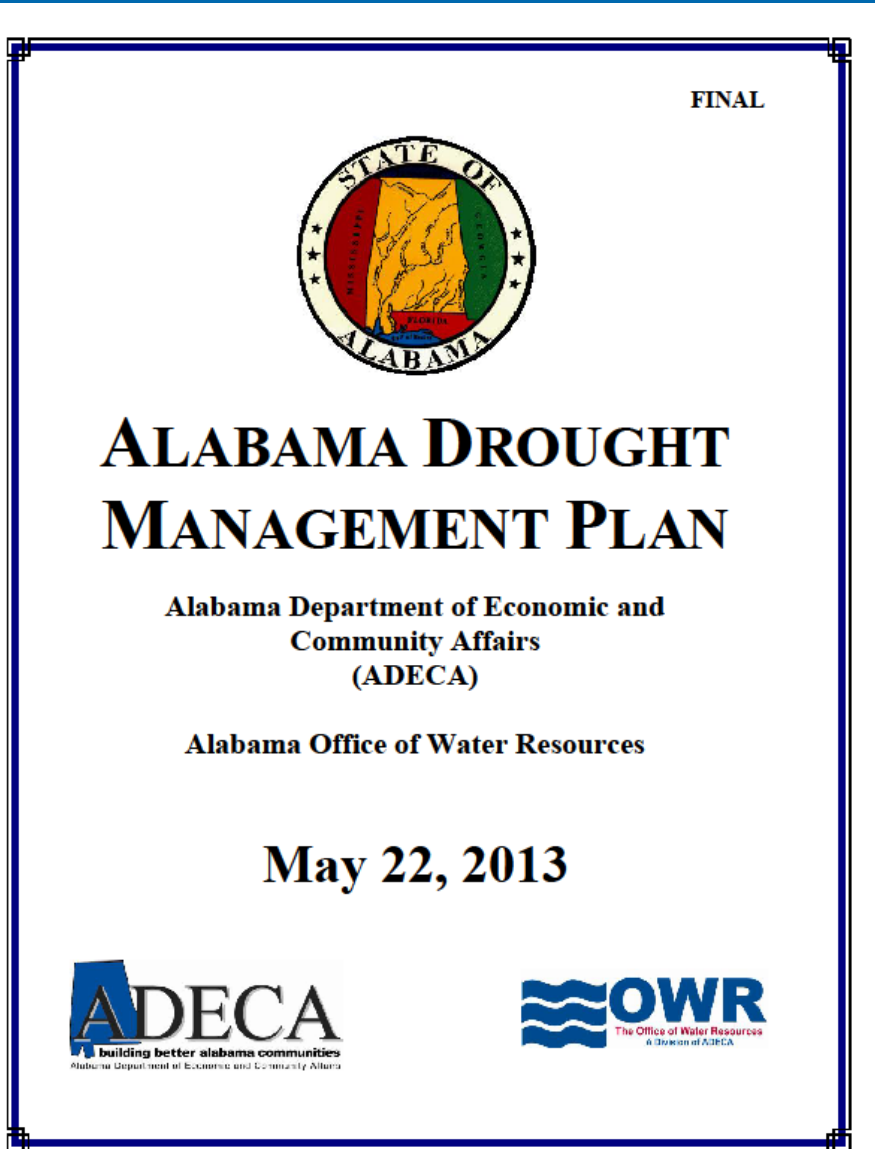
- Proposed rules have been developed and are ready for ADAPT review. MIG concurred in July meeting
- ADAPT endorsement of regulations occurred on Tuesday, September 1, 2015
- Rules will now be presented to Ala Water Resources Commission (AWRC)
- Once AWRC review is complete, OWR will proceed with Legislative Reference Service promulgation process and formal public review

# OWR Regulation Approval Process

OWR Drought Regulations Approval Process Steps	Target Date	Days Difference (includes weekends)	Comments
AWRC Drought Subcommittee (1st Meeting)	7/9/2015		
AWRC Drought Subcommittee (2nd Meeting)			
AWRC Drought Subcommittee (3rd Meeting - if necessary)			
ADECA Preliminary Legal Review of Regs	7/27/2015	18	
ADAPT Concurrence of Regulations	9/1/2015	54	ADAPT approval not req'd but concurrence desired. MIG review to take place prior to ADAPT concurrence.
AWRC Commission Meeting (Approval of Regs for Public Comment)	9/30/2015	65	
File Notice of Intent to LRS (Forms 1 & 2)	10/21/2015	21	Original + 25 copies (plus any OWR record copies) + MS Word electronic file (See LRS Schedule)
Publish Regs and Public Notice by LRS	10/30/2015	9	
Close of Public Comment Period	12/4/2015	35	Minimum of 35 days from date of publication
Reconciliation of Comments by OWR	12/18/2015	14	Line in/line out version: (original + 4 copies + any OWR record copies) Clean version: (original + 4 copies + any OWR record copies)
ADECA Final Legal Review of Regs	12/30/2015	12	
AWRC Commission Meeting (Formal Approval of Regs)	1/29/2016	30	
Submit Certification to LRS (Form 3)	2/5/2016	7	Original + 25 copies (plus any OWR record copies) + MS Word electronic file
90 Day Maximum from End of Public Comment Period to Submittal of Certification to LRS		63	
Effective Date of Regs	3/11/2016	35	35 days from submittal of Certification



# Alabama Drought Management Plan



- Revisions under development for Alabama Drought Management Plan to comply with Drought Act pending approval of drought regulations





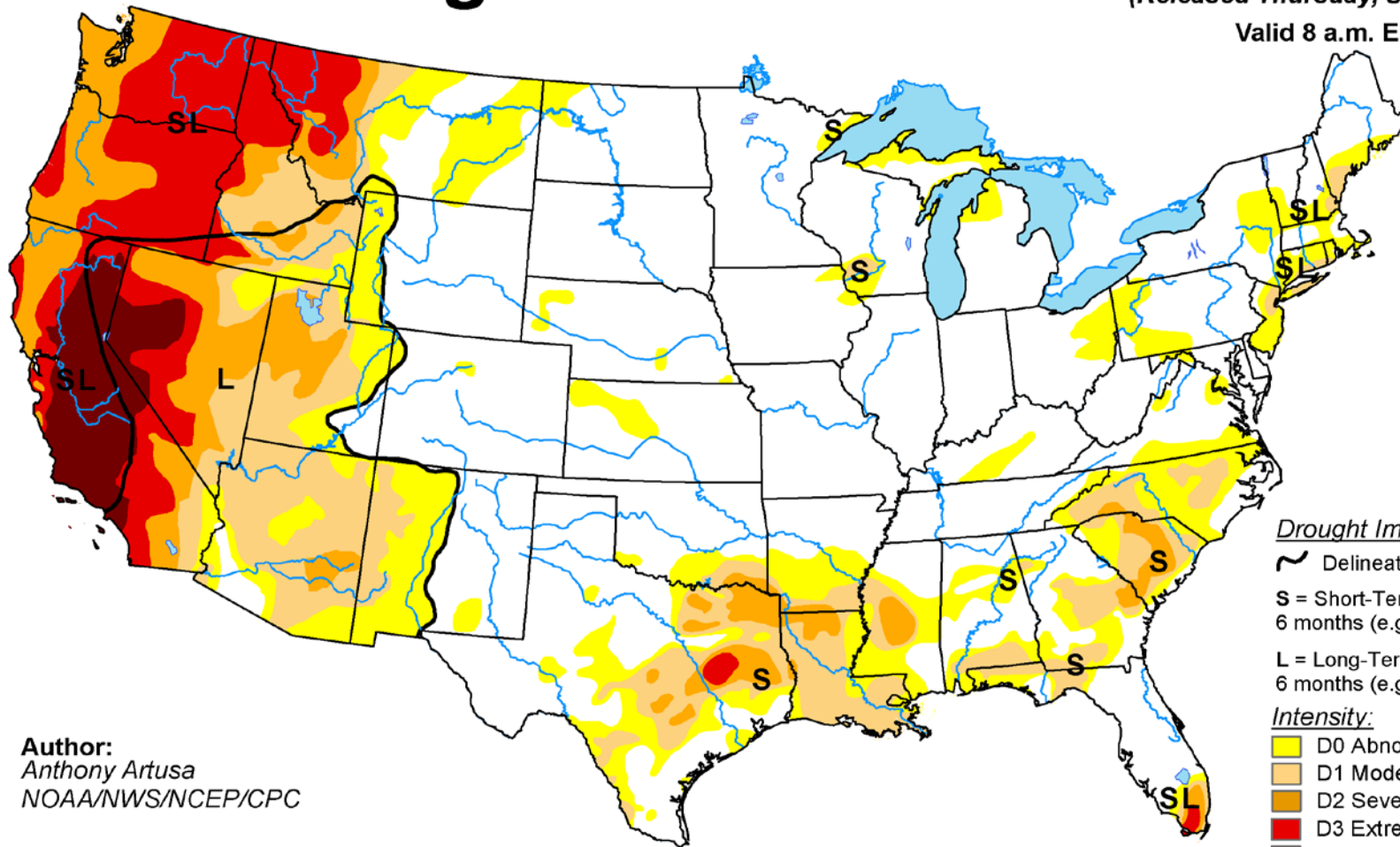
# Basic Provisions

- Primary Focus:  
Communications and Coordination
- Components:
  - Structure
  - Process
  - **US Drought Monitor Input**
  - Alabama Drought Declaration
  - Data Availability and Analysis
  - Education and Outreach

# U.S. Drought Monitor

September 1, 2015  
(Released Thursday, Sep. 3, 2015)

Valid 8 a.m. EDT



Author:  
Anthony Artusa  
NOAA/NWS/NCEP/CPC

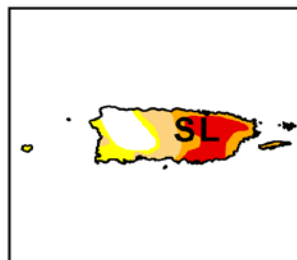
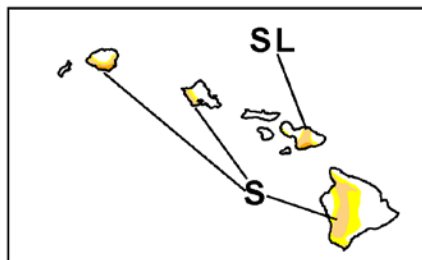
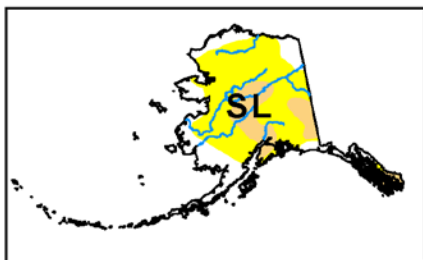
## Drought Impact Types:

- ~ Delineates dominant impacts  
S = Short-Term, typically less than 6 months (e.g. agriculture, grasslands)  
L = Long-Term, typically greater than 6 months (e.g. hydrology, ecology)

## Intensity:

- D0 Abnormally Dry
- D1 Moderate Drought
- D2 Severe Drought
- D3 Extreme Drought
- D4 Exceptional Drought

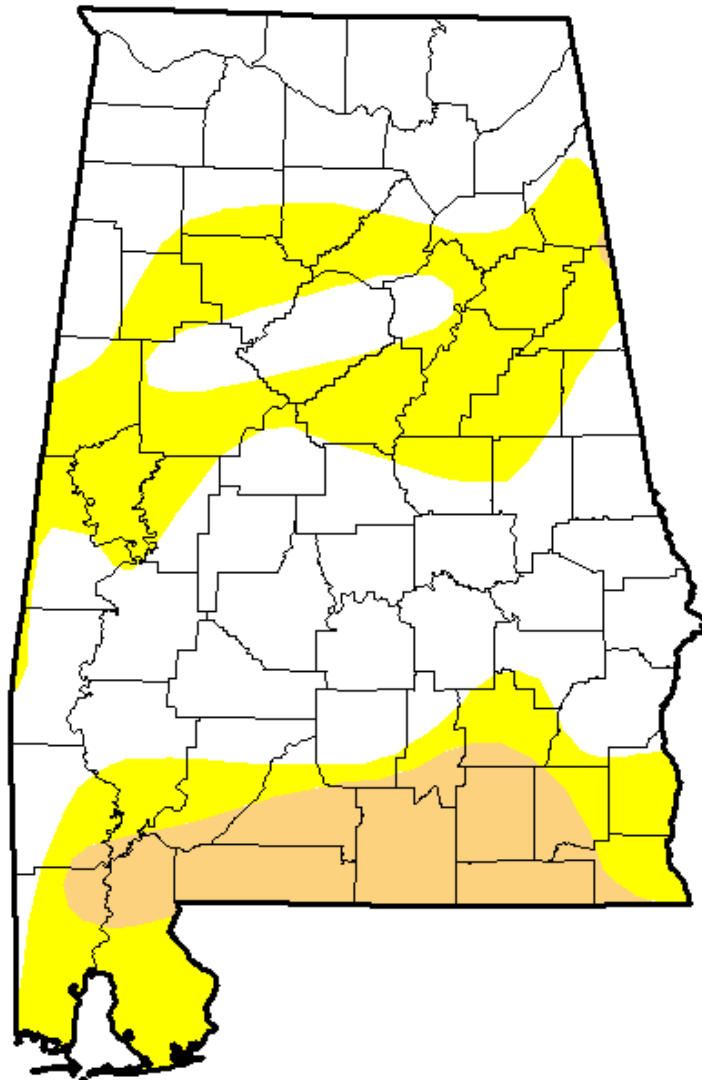
The Drought Monitor focuses on broad-scale conditions. Local conditions may vary. See accompanying text summary for forecast statements.



<http://droughtmonitor.unl.edu/>

# U.S. Drought Monitor

## Alabama



**September 1, 2015**

(Released Thursday, Sep. 3, 2015)

Valid 8 a.m. EDT

*Drought Conditions (Percent Area)*

	None	D0-D4	D1-D4	D2-D4	D3-D4	D4
<b>Current</b>	57.18	42.82	11.16	0.00	0.00	0.00
<b>Last Week</b> 8/25/2015	50.15	49.85	4.97	0.00	0.00	0.00
<b>3 Months Ago</b> 6/2/2015	96.74	3.26	0.00	0.00	0.00	0.00
<b>Start of Calendar Year</b> 12/30/2014	62.49	37.51	3.77	0.00	0.00	0.00
<b>Start of Water Year</b> 9/30/2014	17.21	82.79	26.99	1.25	0.00	0.00
<b>One Year Ago</b> 9/2/2014	34.99	65.01	10.19	0.01	0.00	0.00

### Intensity:

 D0 Abnormally Dry	 D3 Extreme Drought
 D1 Moderate Drought	 D4 Exceptional Drought
 D2 Severe Drought	

*The Drought Monitor focuses on broad-scale conditions. Local conditions may vary. See accompanying text summary for forecast statements.*

### **Author:**

Anthony Artusa

NOAA/NWS/NCEP/CPC



<http://droughtmonitor.unl.edu/>

# Basic Provisions

- Primary Focus:  
Communications and Coordination
- Components:
  - Structure
  - Process
  - US Drought Monitor Input
  - **Alabama Drought Declaration**
  - Data Availability and Analysis
  - Education and Outreach



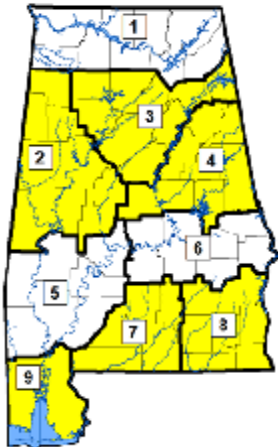
Release Date: August 5, 2015



## For Public Dissemination Alabama Drought Declaration

In accordance with the Alabama Drought Planning and Response Act (Code of Ala. 1975, §9-10C-1, et seq.) and the Alabama Drought Management Plan, the ADECA Office of Water Resources (OWR), based on a review of current and anticipated conditions, has declared the following portions of Alabama to be under the specified drought declaration levels.

<u>Declaration</u>	<u>Region(s) Impacted</u>
Emergency	None
Warning	None
Watch	None
Advisory	Regions 2, 3, 4, 7, 8, and 9 in the Alabama Drought Management Plan which includes the counties of: Baldwin, Barbour, Bibb, Blount, Butler, Calhoun, Chambers, Cherokee, Chilton, Clay, Cleburne, Coffee, Conecuh, Coosa, Covington, Crenshaw, Cullman, Dale, Escambia, Etowah, Fayette, Geneva, Greene, Hale, Henry, Houston, Jefferson, Lamar, Marion, Mobile, Perry, Pickens, Pike, Randolph, Shelby, St. Clair, Sumter, Talladega, Tallapoosa, Tuscaloosa, Walker, and Winston.
None	Regions 1, 5, and 6 in the Alabama Drought Management Plan which includes the counties of: Autauga, Bullock, Choctaw, Clarke, Colbert, Dallas, DeKalb, Elmore, Franklin, Jackson, Lauderdale, Lawrence, Lee, Limestone, Lowndes, Macon, Madison, Marengo, Marshall, Monroe, Montgomery, Morgan, Russell, Washington, and Wilcox.



Legend
No Drought Declaration
Advisory
Watch
Warning
Emergency

The higher temperatures and limited rainfall for this time of year continue to cause dry conditions. Reservoir levels are beginning to dip due to decreasing inflows. As a result of these conditions, Drought Region 4 was added to the Advisory level. Public water system managers and other non-public and private water users should carefully monitor water conditions. The OWR will regularly assess conditions and modify this drought declaration as needed.

# Current Drought Declaration



# Basic Provisions

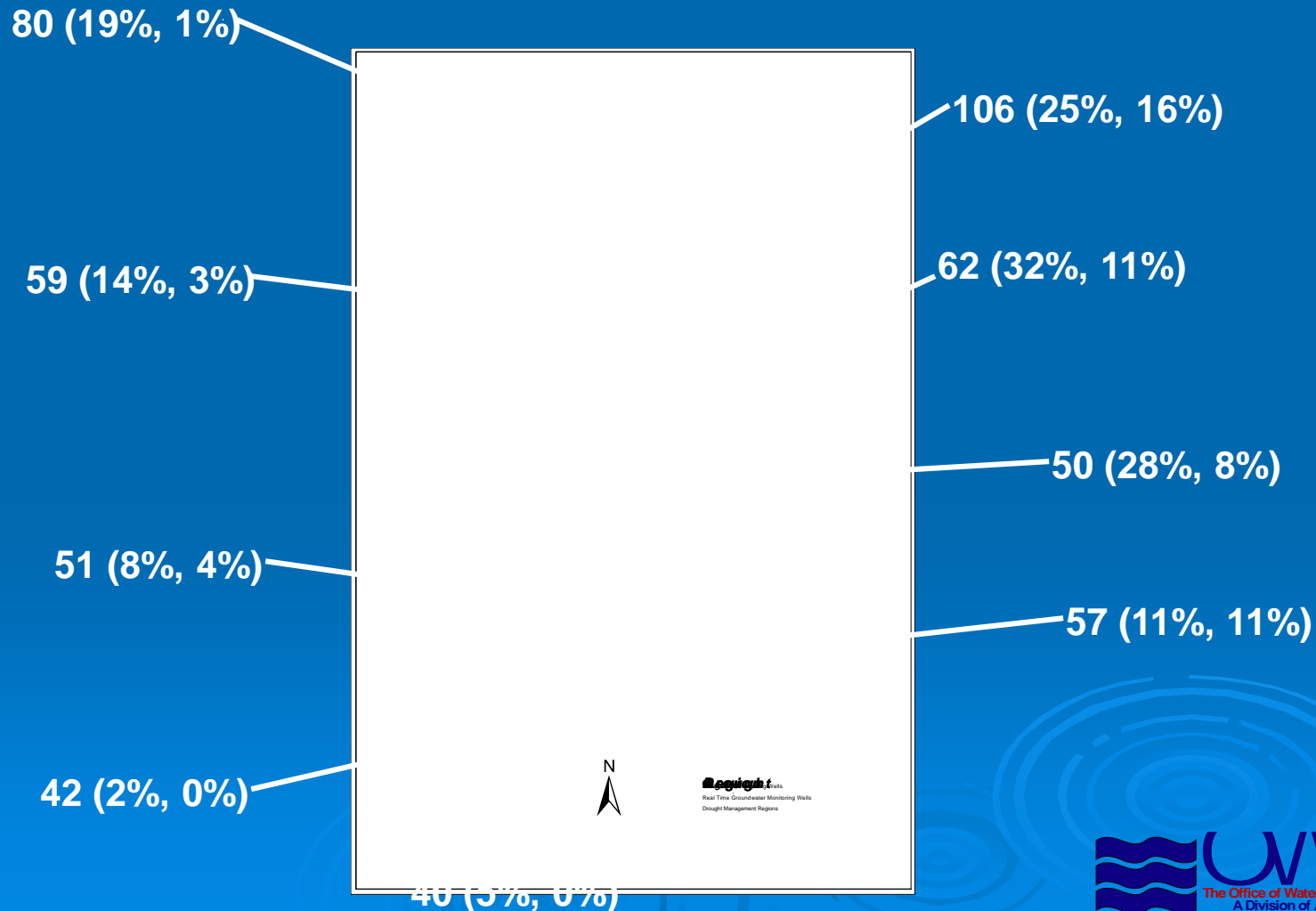
- Primary Focus:  
Communications and Coordination
- Components:
  - Structure
  - Process
  - US Drought Monitor Input
  - Alabama Drought Declaration
  - **Data Availability and Analysis**
  - Education and Outreach



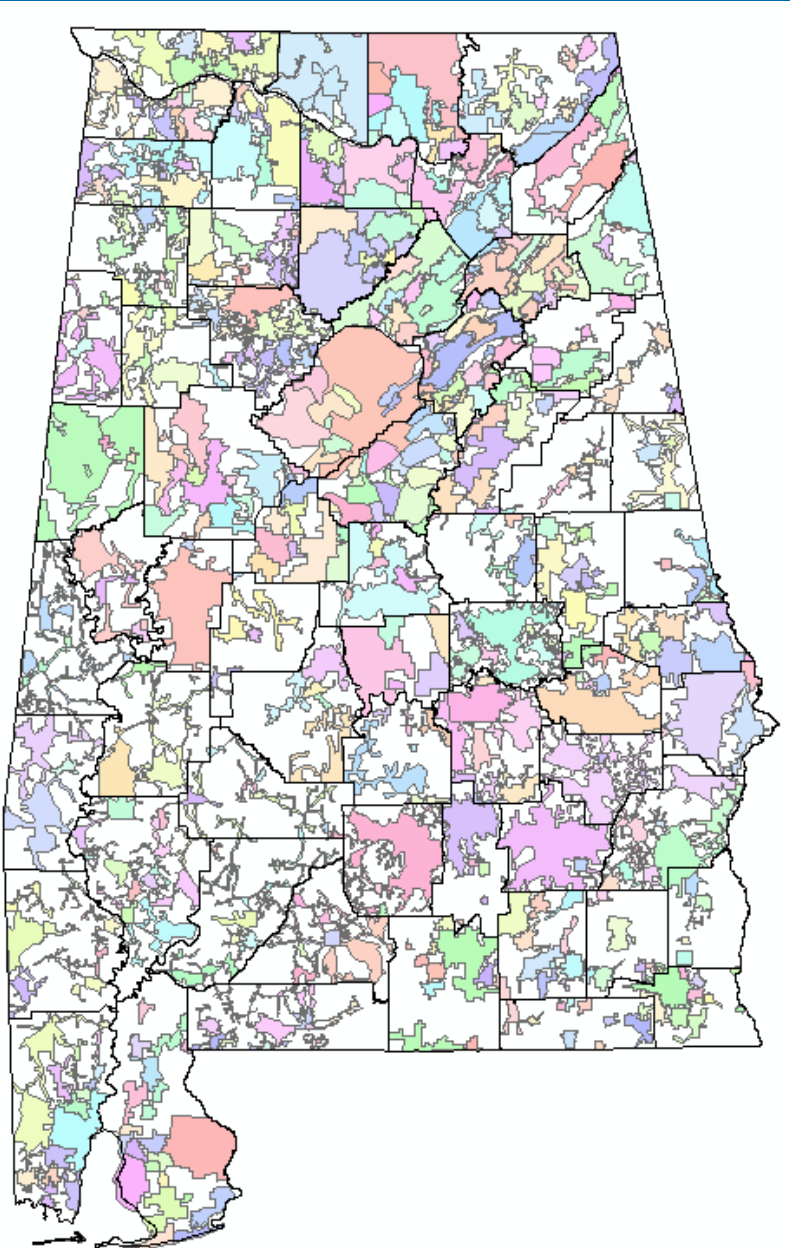
# Public Water System Restrictions

## 2007 Example

Number of systems (% Voluntary, %Mandatory)

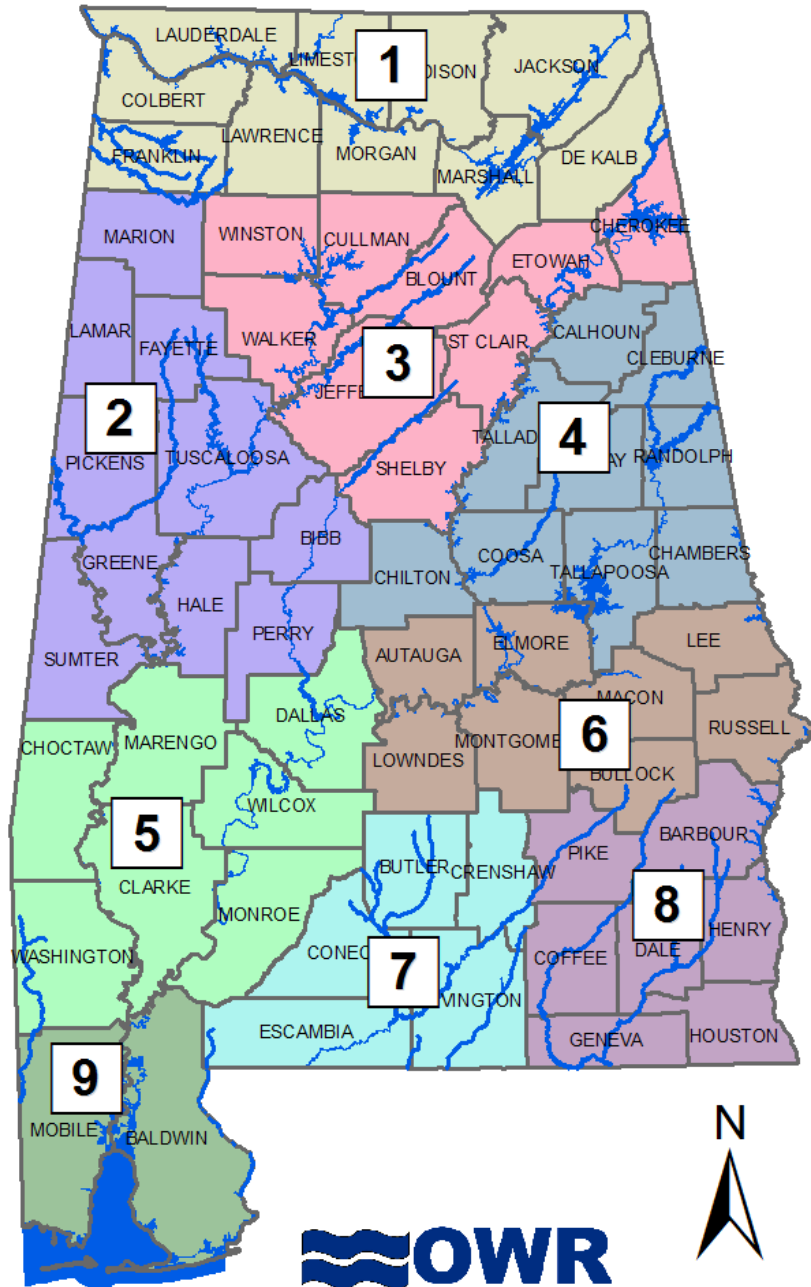


# Water System Mapping



- Initiative to develop GIS coverage of public water system boundaries and intersystem connections in Alabama
- Goal is to work with local systems in updating service areas and system boundaries
- Will support the use of reported data

# Alabama Drought Planning Regions



# How Do We Assess All This Data?

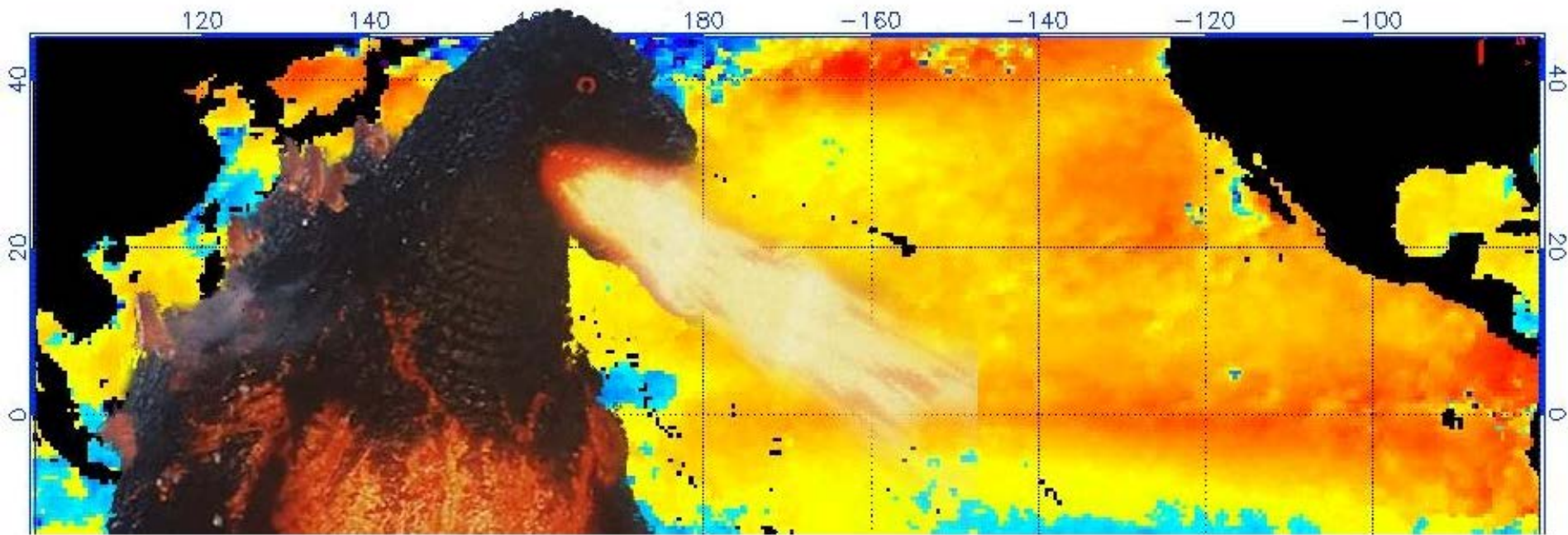
## Data elements:

- Rainfall
- Soil Moisture
- Lawn and Garden Index
- Streamflows
- Reservoir elevations and inflows
- Groundwater levels
- Forestry status
- Impact analysis (Agriculture, Recreation, Public health/safety, Environmental indicators, etc.)

	Lawn and Garden Index	Crop Moisture Index	Palmer Drought Severity Index	Streamflow Level	Reservoir Status	Groundwater Level	Keetch-Byram Drought Index	Agriculture Input	Public Water System Status	Rainfall (180 day)	OVERALL	
Region 1	0	0	0	2	0	0	0	0	0	0	2	Normal
Region 2	1	0	0	0	0	0	1	0	0	0	2	Normal
Region 3	1	0	0	1	0	0	1	0	0	0	3	Normal
Region 4	2	0	1	2	0	0	2	0	0	0	7	Advisory
Region 5	1	0	0	3	0	0	2	0	0	0	6	Advisory
Region 6	2	0	0	1	0	0	2	0	0	0	5	Advisory
Region 7	1	1	1	3		0	2	0	0	1	9	Advisory
Region 8	2	1	1	1		2	2	0	0	1	10	Watch
Region 9	1	0	0	2		0	1	0	0	0	4	Normal

# Godzilla El Nino – What Does It Mean?

NOAA/NESDIS SST Anomaly (degrees C), 8/13/2015

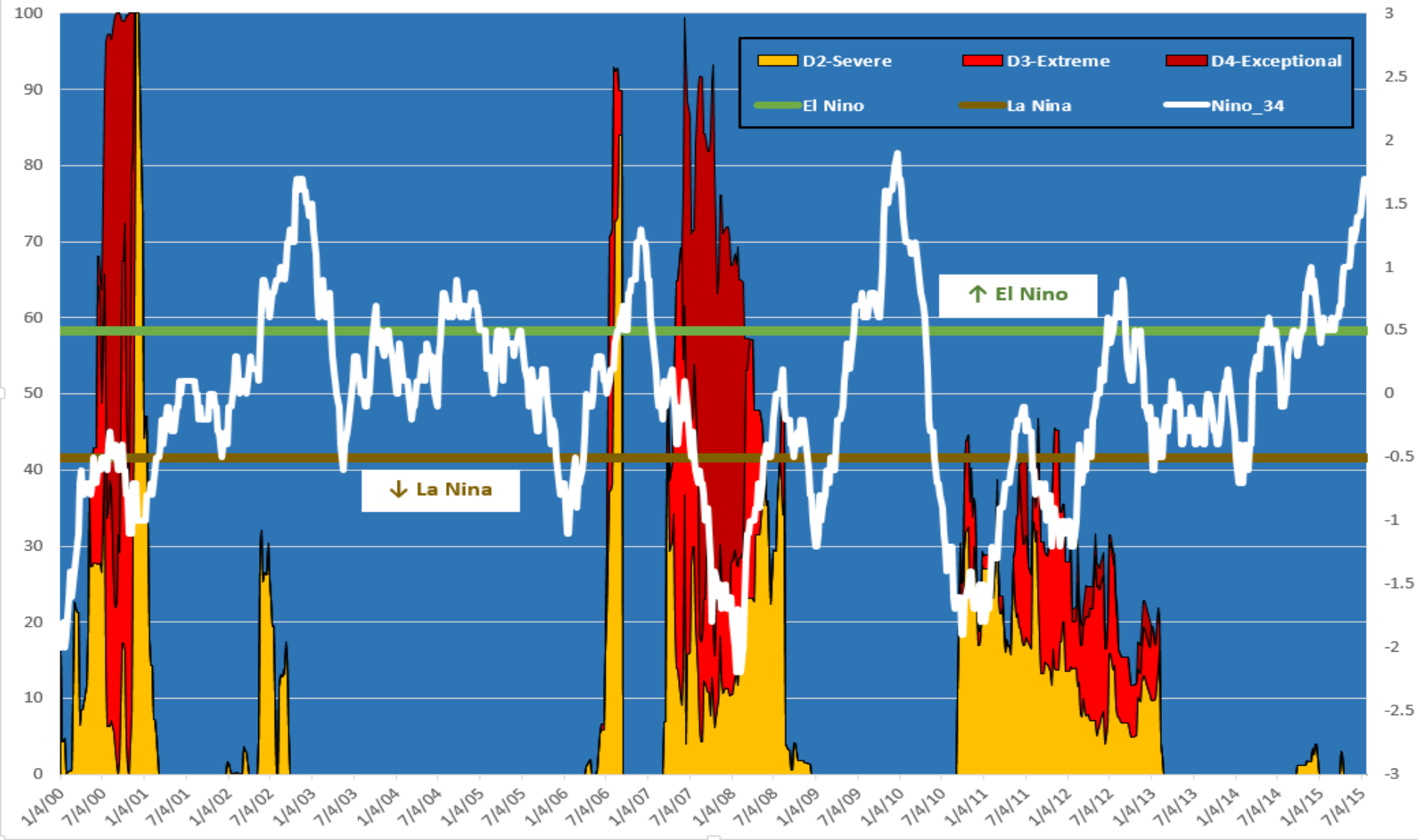


Graphic Courtesy of Gary McManus, OK State Climatologist



# Alabama Drought Monitor vs. ENSO

Alabama Drought Monitor vs ENSO (Nino 3.4 Region)



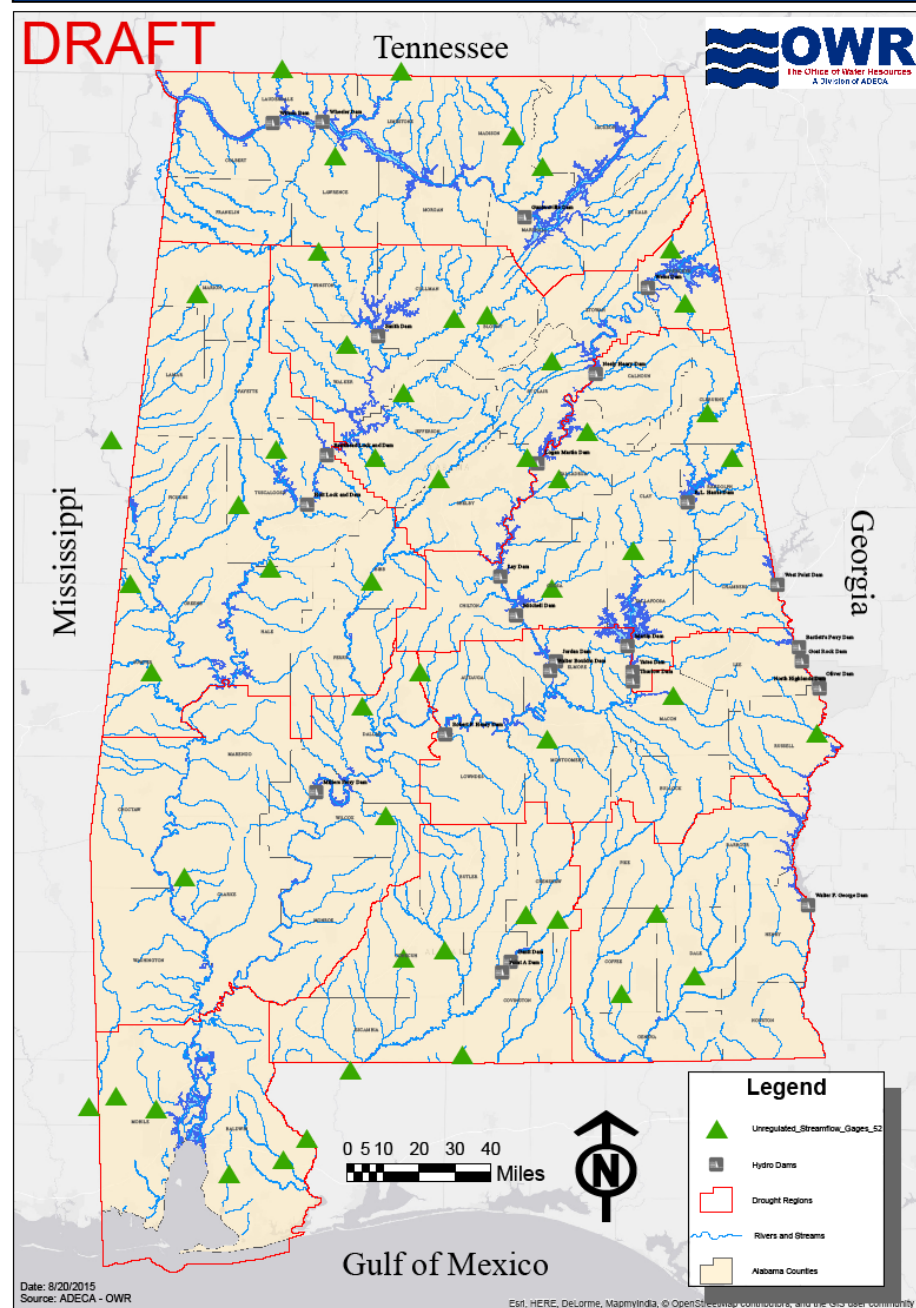


# Drought Flow Assessment Tool

- Unregulated USGS gages ~ 30 gages
- 7-Day, 30, 60, and 90 day rear looking average streamflow based on period of record for each gage
- Shows Drought Level, current flow (cfs), and current non-exceedance percentage
- Tool is also available for regulated streams as well as storage projects

## Unregulated Streamflow Assessment Sites

# Unregulated USGS Gages For Alabama Drought Assessment



# OWR Drought Flow Assessment Tool – Unregulated Site

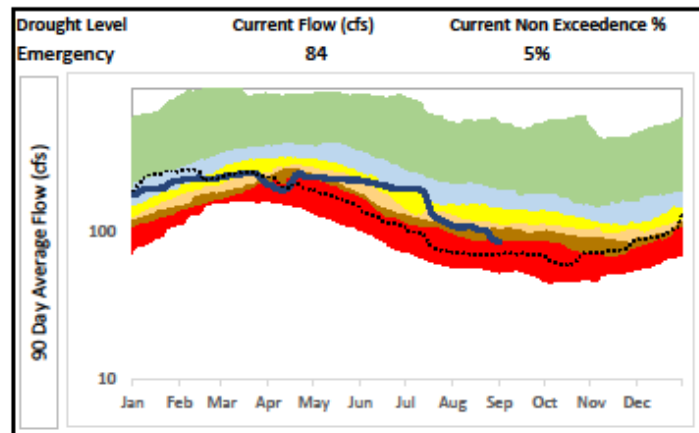
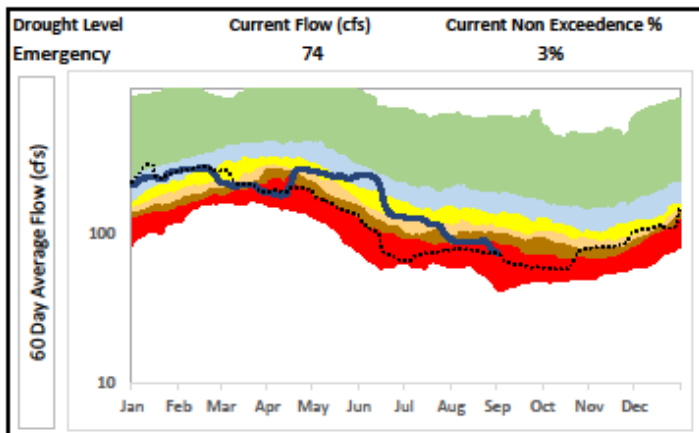
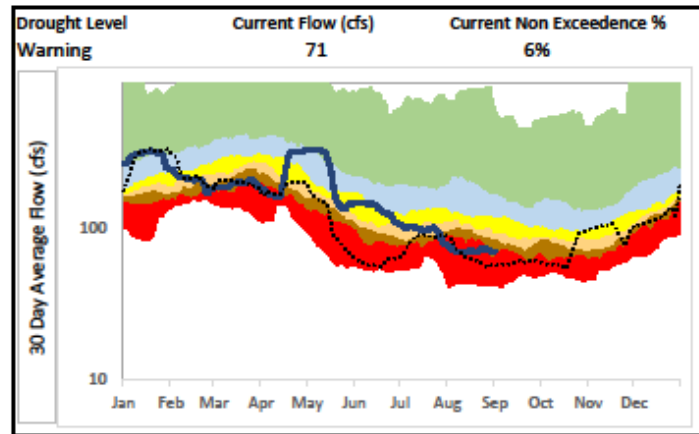
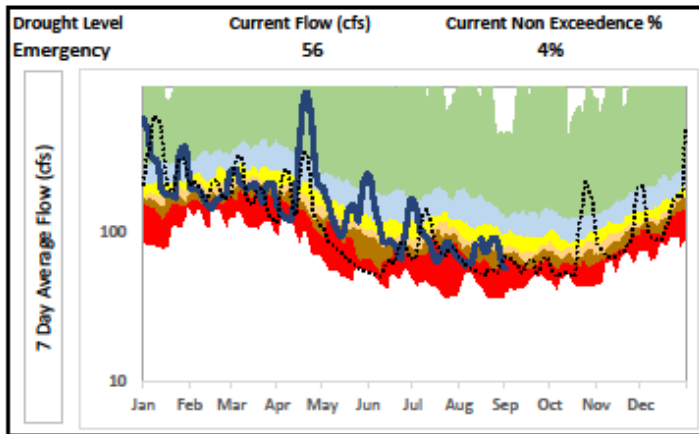
**DRAFT**

Gage #: 02374500

Name: MURDER CREEK NEAR EVERGREEN AL

Period of Record: 10/1/1937 -

9/1/2015



\*Disclaimer: USGS data used for this analysis. There may be some data gaps and/or provisional data



# OWR Drought Flow Assessment Tool – Regulated Site

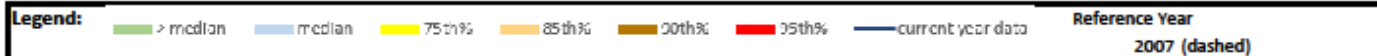
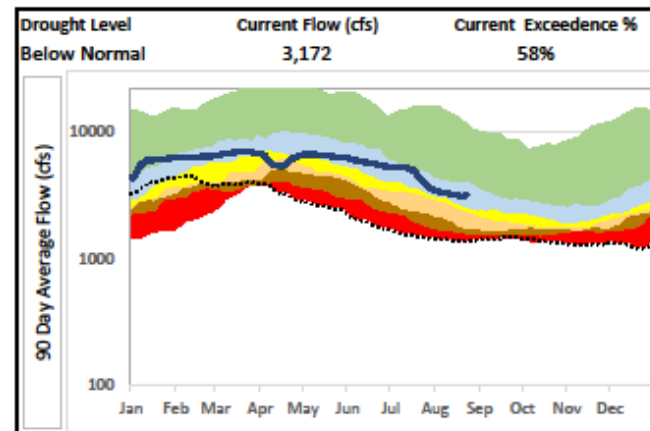
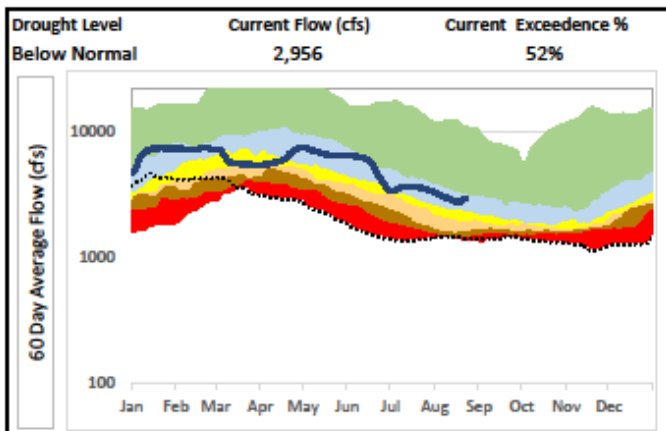
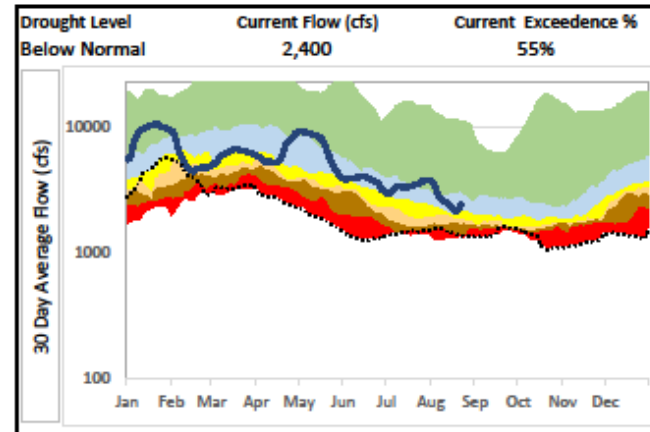
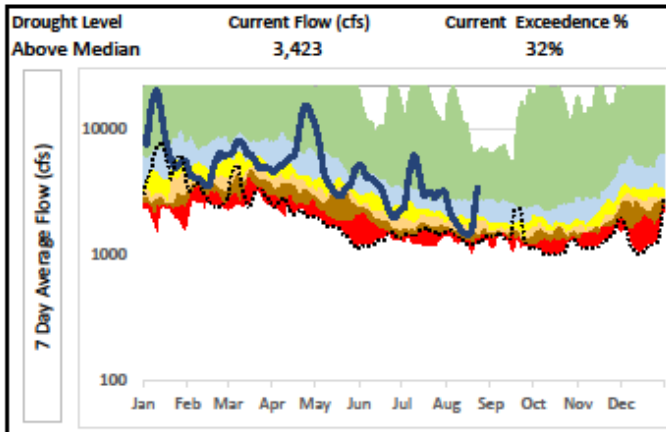
**DRAFT**

Gage #: 02397000

Name: Coosa River near Rome GA (Mayo's Bar)

Period of Record: 1/1/1980 -

8/23/2015



# OWR Drought Flow Assessment Tool – Reservoir Elevations

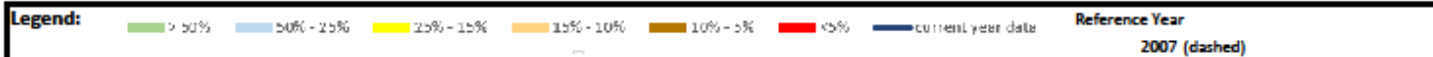
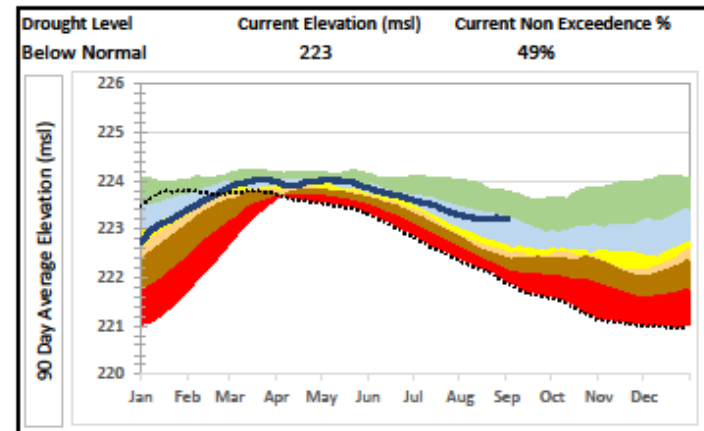
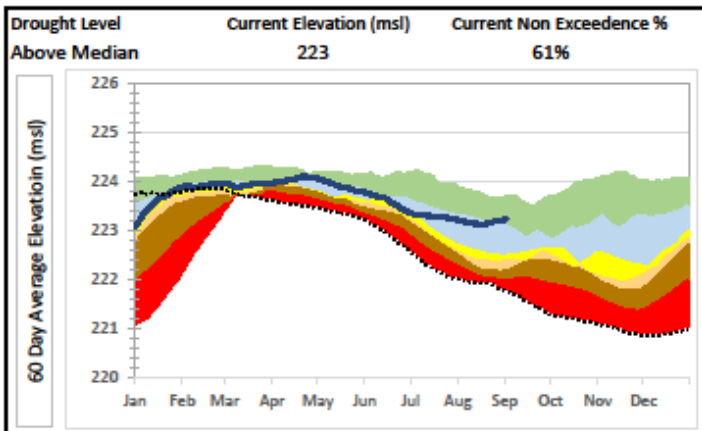
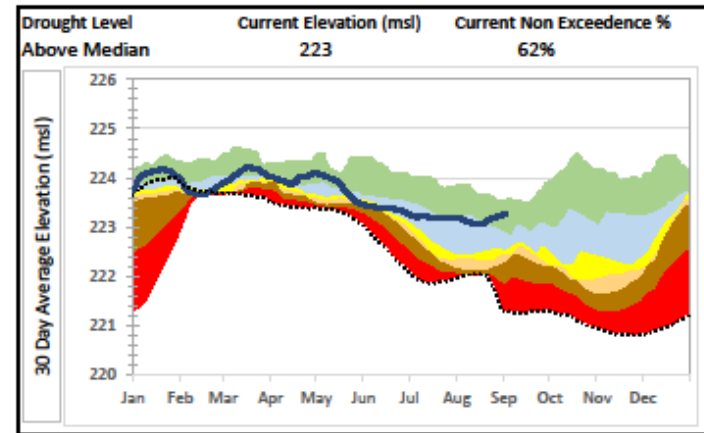
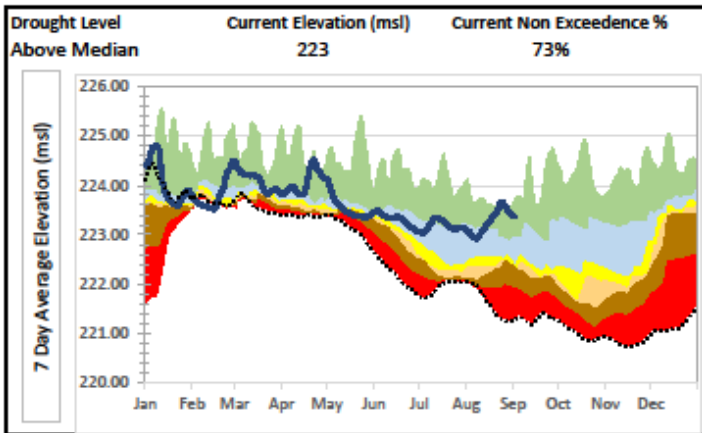
**DRAFT**

Gage #: 02464800

Name: Lake Tuscaloosa

Period of Record: 7/4/2002 -

9/2/2015



\*Disclaimer: USGS data used for this analysis. There may be some data gaps and/or provisional data




# Basic Provisions


- Primary Focus:  
Communications and Coordination
- Components:
  - Structure
  - Process
  - US Drought Monitor Input
  - Alabama Drought Declaration
  - Data Availability and Analysis
  - **Education and Outreach**



# OWR Drought Web Site (<http://water.alabama.gov>)



Alabama Department of Economic and Community Affairs




ABOUT • DIVISIONS • NEWS •

## Divisions

- ▶ Communications and Information
- ▶ Community and Economic Development
- ▶ Energy
- ▶ Law Enforcement and Traffic Safety
- ▶ Office of Water Resources
  - ▶ Floodplain Management
  - ▶ **Drought Planning and Management in Alabama**
  - ▶ Water Management
  - ▶ Interstate Water Issues
  - ▶ Alabama Water Resources Commission
  - ▶ Alabama Water Agencies Working Group
- ▶ Surplus Property
- ▶ Workforce Development
- ▶ Support Sections

ADECA > Divisions > Office of Water Resources > Drought Planning and Management in Alabama

## Drought Planning and Management in Alabama



The goal of Alabama's drought planning and management process is to ensure accurate and consistent information concerning hydrologic and drought conditions, impacts, and forecasts around the state. Further, through the use of an extensive communication and coordination process and state Drought Declarations, ADECA's Office of Water Resources (OWR) helps water managers, stakeholders, and other users understand where and how severe drought conditions exist and the best available information concerning forecasted changes.

(Photo: Pier at Lake Martin in 2007)

 [Click here for the most recent Drought Declaration.](#)

**Click below for more drought information:**


<a href="#">Alabama Drought Planning and Response Act</a>
<a href="#">Alabama Drought Planning Organizational Structure</a>
<a href="#">Alabama Drought Information Center</a>
<a href="#">Water Conservation</a>
<a href="#">Contact</a>

### Alabama Drought Planning and Response Act

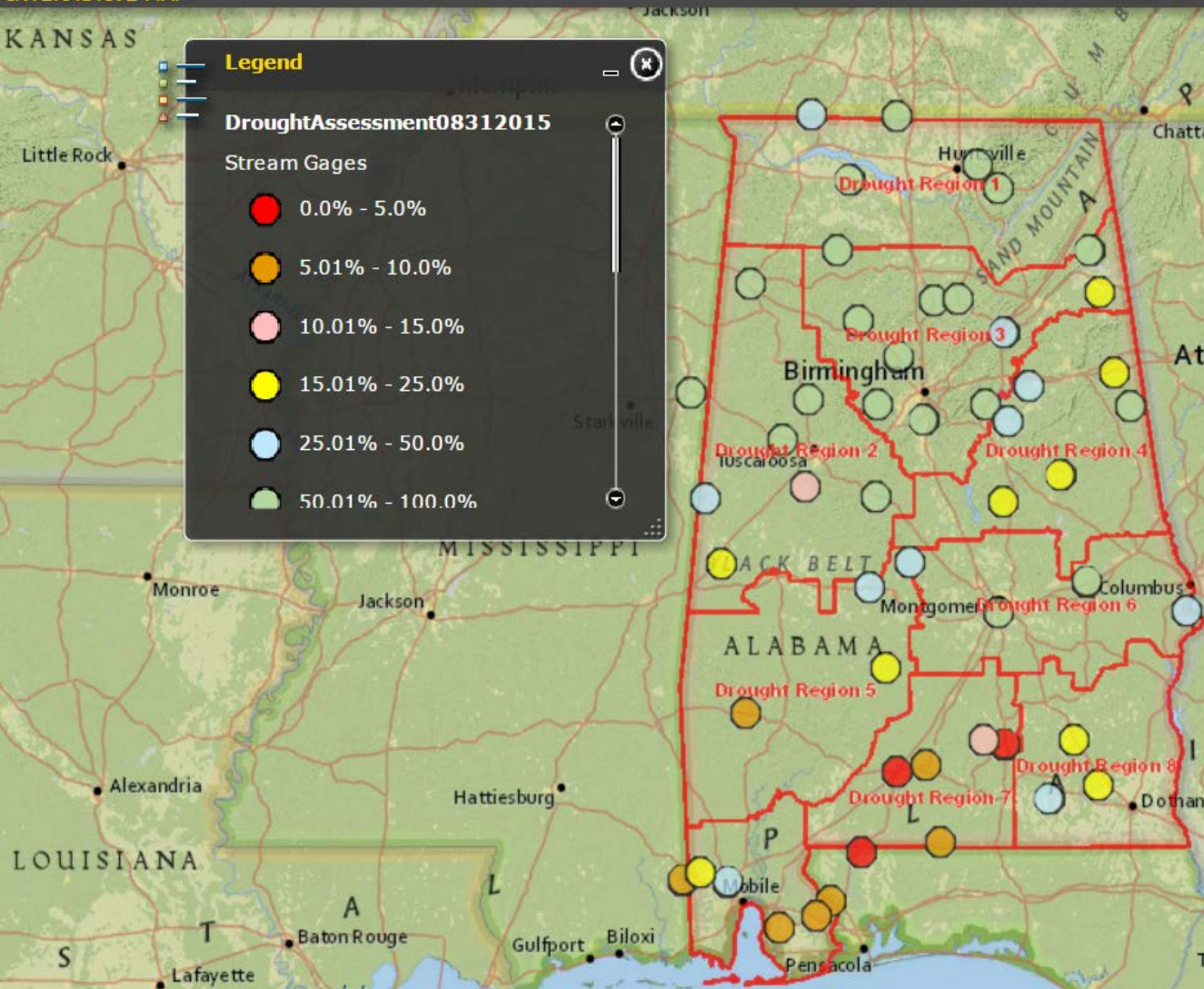
Governor Robert Bentley signed into law the Alabama Drought Planning and Response Act (Code of Ala. 1975, §§9-10C-1 et seq.) on April 9, 2014. The Act formally establishes state government's role in planning, monitoring, and responding to severely dry conditions.

The law replaces a previously issued executive order, establishes the Alabama Drought Planning and Assessment Team (ADAPT), and defines permanent roles for OWR and other state agencies by:

- Codifying the current organizational structure including the ADAPT to advise the Governor on state activities related to droughts, and the Monitoring and Impact Group (MIG) as an ADAPT subcommittee to develop technical assessments of drought conditions and impacts.
  - The ADAPT advises the Governor and OWR about state activities related to droughts with information developed by the Monitoring and Impact Group that collects and analyzes stream-flow levels, rainfall, soil moisture and other drought-related data. The ADAPT is made up of representatives from various state and federal agencies and appointees as outlined in the Alabama Drought Planning Organizational Structure section below.
- Codifying the charge given to OWR to develop and maintain a state drought plan and issue Drought Declarations.
- Clarifying the role of the Alabama State Climatologist.
- Reaffirming the Governor's role in responding to drought related events; and
- Ensuring that adequate information concerning the supply and demand of water is available for the assessment of conditions.



Water Resources  
of ADECA

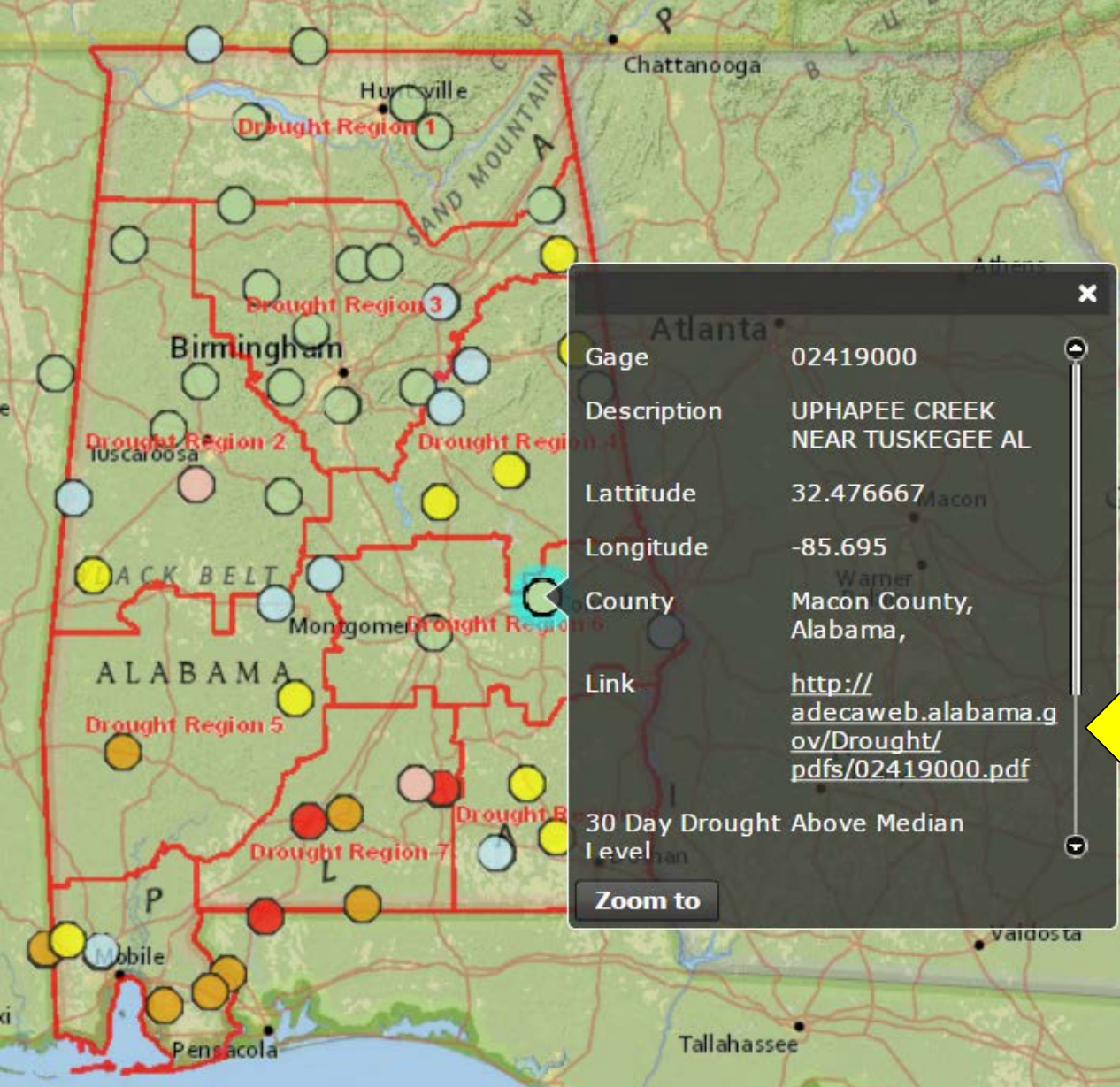


# Alabama GIS Interactive Drought Flow Portal

Web Site: <http://adecaweb.alabama.gov/flexviewers/drought/>



# Alabama GIS Interactive Drought Flow Portal



Click on link

# OWR Drought Flow Assessment Tool – Uphapee Creek (#02419000)

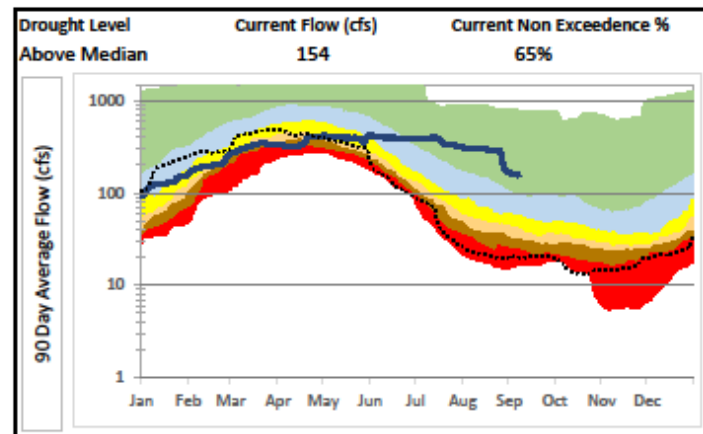
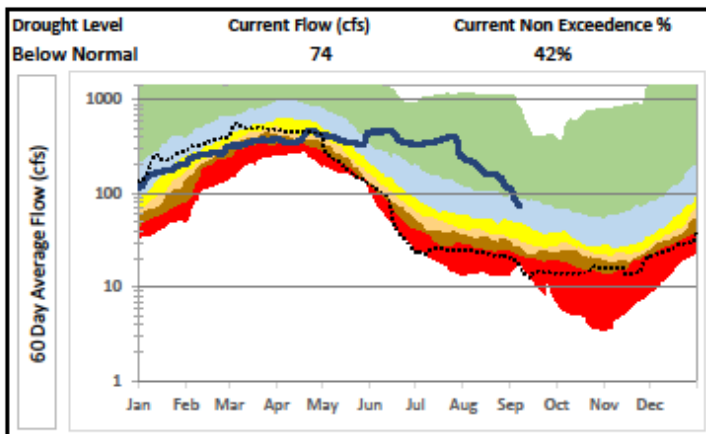
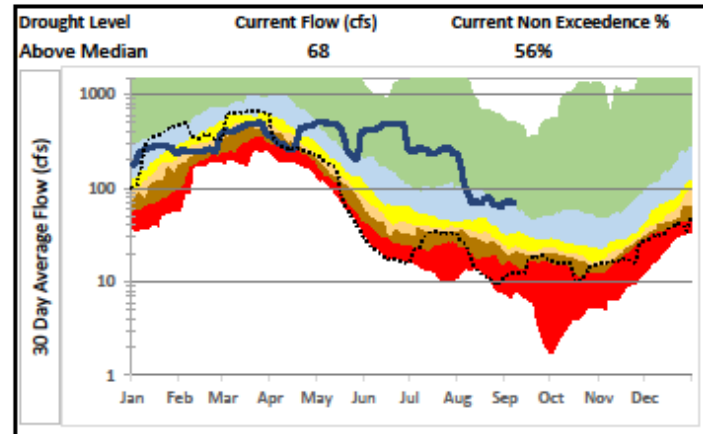
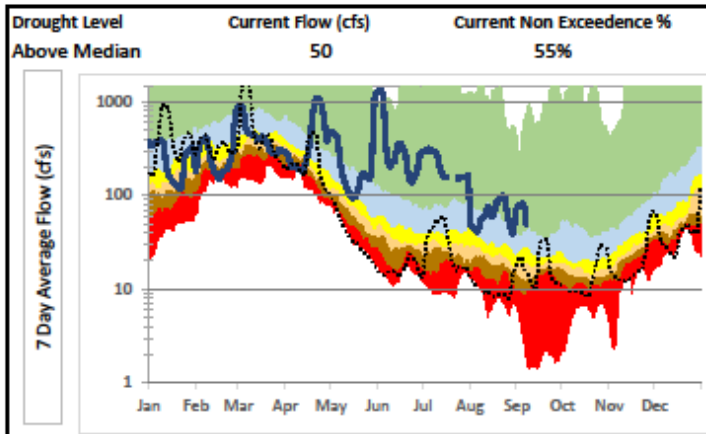
**DRAFT**

Gage #: 02419000

Name: UPHAPEE CREEK NEAR TUSKEGEE AL

Period of Record: 10/1/1939

- 9/7/2015



\*Disclaimer: USGS data used for this analysis. There may be some data gaps and/or provisional data



**DRAFT**

# OWR Drought Flow Assessment Tool

## Gage Summary Sheet

Gage	Name	7 day drought level	30 day drought level	60 day drought level	90 day drought level	Drought Region
02342500	UCHEE CREEK NEAR FORT MITCHELL, AL.	Above Median	Below Normal	Below Normal	Below Normal	6
02361000	CHOCTAWHATCHEE RIVER NEAR NEWTON, AL.	Below Normal	Advisory	Advisory	Advisory	8
02362240	LITTLE DOUBLE BRIDGES CREEK NR ENTERPRISE, AL.	Below Normal	Below Normal	Above Median	Above Median	8
02363000	PEA RIVER NEAR ARITON AL	Advisory	Advisory	Advisory	Below Normal	8
02369800	BLACKWATER RIVER NEAR BRADLEY AL	Emergency	Warning	Warning	Advisory	7
02371500	CONECUH RIVER AT BRANTLEY AL	Warning	Warning	Warning	Warning	7
02372250	PATSALIGA CREEK NEAR BRANTLEY AL	Advisory	Watch	Advisory	Advisory	7
02373000	SEPULGA RIVER NEAR MCKENZIE AL	Warning	Watch	Watch	Advisory	7
02374500	MURDER CREEK NEAR EVERGREEN AL	Emergency	Warning	Emergency	Emergency	7
02375500	ESCAMBIA RIVER NEAR CENTURY, FL	Emergency	Emergency	Warning	Watch	7
02376500	PERDIDO RIVER AT BARRINEAU PARK, FL	Emergency	Warning	Warning	Warning	9
02377570	STYX RIVER NEAR ELSANDOR, AL	Warning	Warning	Emergency	Warning	9
02378500	FISH RIVER NEAR SILVER HILL AL	Emergency	Watch	Warning	Warning	9
02399200	LITTLE RIVER NEAR BLUE POND AL	Above Median	Above Median	Below Normal	Below Normal	3
02400100	TERRAPIN CREEK AT ELLISVILLE AL	Advisory	Advisory	Advisory	Advisory	3
02401390	BIG CANOE CREEK AT ASHVILLE AL	Above Median	Below Normal	Below Normal	Advisory	3
02404400	CHOCOLOCCO CREEK AT JACKSON SHOAL NR LINCOLN AL	Below Normal	Below Normal	Above Median	Above Median	4
02405500	KELLY CREEK NEAR VINCENT AL	Above Median	Above Median	Above Median	Above Median	3
02406500	TALLADEGA CREEK AT ALPINE AL	Above Median	Below Normal	Below Normal	Below Normal	4
02408540	HATCHET CREEK BELOW ROCKFORD AL	Watch	Advisory	Below Normal	Advisory	4
02412000	TALLAPOOSA RIVER NEAR HEFLIN, ALA.	Below Normal	Advisory	Advisory	Advisory	4
02413300	LITTLE TALLAPOOSA RIVER NEAR NEWELL AL	Above Median	Above Median	Above Median	Below Normal	4
02415000	HILLABEE CREEK NEAR HACKNEYVILLE AL	Above Median	Advisory	Advisory	Advisory	4
02419000	UPHAPEE CREEK NEAR TUSKEGEE AL	Above Median	Above Median	Above Median	Above Median	6
02421000	CATOMA CREEK NEAR MONTGOMERY AL	Above Median	Above Median	Above Median	Above Median	6
02422500	MULBERRY CREEK AT JONES AL	Above Median	Below Normal	Below Normal	Below Normal	3
02423500	CAHABA RIVER NEAR ACTON AL	Above Median	Above Median	Above Median	Above Median	3
02424000	CAHABA RIVER AT CENTREVILLE AL	Above Median	Above Median	Above Median	Above Median	2
02425000	CAHABA RIVER NEAR MARION JUNCTION AL	Above Median	Below Normal	Below Normal	Below Normal	5
02427250	PINE BARREN CREEK NEAR SNOW HILL, AL	Below Normal	Advisory	Watch	Advisory	5
02438000	BUTTAHATCHEE RIVER BELOW HAMILTON AL	Above Median	Above Median	Above Median	Above Median	2
02443500	LUXAPALLILA CREEK NR COLUMBUS, MS	Above Median	Above Median	Above Median	Above Median	2
02446500	SIPSEY RIVER NR ELROD, AL	Above Median	Above Median	Above Median	Below Normal	2
02448500	NOXUBEE RIVER NR GEIGER, AL	Below Normal	Below Normal	Advisory	Advisory	2
02450000	MULBERRY FORK NEAR GARDEN CITY, AL.	Above Median	Above Median	Below Normal	Below Normal	3
02450250	SIPSEY FORK NEAR GRAYSON AL	Above Median	Above Median	Above Median	Below Normal	3
02453000	BLACKWATER CREEK NEAR MANCHESTER AL	Above Median	Above Median	Above Median	Above Median	3
02455000	LOCUST FORK NEAR CLEVELAND, AL.	Above Median	Above Median	Below Normal	Below Normal	3
02456500	LOCUST FORK AT SAYRE, AL.	Above Median	Above Median	Above Median	Below Normal	3
02462000	VALLEY CREEK NEAR OAK GROVE AL	Below Normal	Above Median	Above Median	Below Normal	3
02464000	NORTH RIVER NEAR SAMANTHA AL	Above Median	Above Median	Below Normal	Below Normal	2
02465493	ELLIOTTS CREEK AT MOUNDVILLE AL	Warning	Watch	Watch	Advisory	2
02467500	SUCARNOOCHEE RIVER AT LIVINGSTON AL	Below Normal	Advisory	Below Normal	Below Normal	2
02469800	SATILPA CREEK NEAR COFFEEVILLE AL	Watch	Warning	Advisory	Advisory	5
02471001	CHICKASAW CREEK NEAR KUSHLA AL	Advisory	Below Normal	Below Normal	Below Normal	9
02479560	ESCATAWPA RIVER NEAR AGRICOLA MS	Emergency	Warning	Watch	Below Normal	9
02479945	BIG CREEK AT COUNTY RD 63 NEAR WILMER, AL.	Warning	Advisory	Warning	Advisory	9
03574500	PAINT ROCK RIVER NEAR WOODVILLE AL	Above Median	Above Median	Above Median	Above Median	1
03575100	FLINT RIVER AT BROWNSBORO, AL.	Above Median	Above Median	Above Median	Above Median	1
03584600	ELK RIVER AT PROSPECT, TN	Above Median	Above Median	Above Median	Above Median	1
03586500	BIG NANCE CREEK AT COURTLAND AL	Above Median	Above Median	Below Normal	Advisory	1
03588500	SHOAL CREEK AT IRON CITY, TN	Below Normal	Below Normal	Below Normal	Below Normal	1

# What's Next?

- Once regulations are adopted, we will:
  - Finalize development on web site to allow for on-line drought-related reporting
  - Revise the Alabama Drought Plan
  - OWR will emphasize education and outreach to inform water systems, stakeholders, water users, and the public about Alabama's drought response processes
- Currently working with the MIG on refining and improving drought indicators and triggers to enhance Drought Declaration process



# Questions?

**Tom Littlepage**

**Alabama Office of Water Resources**

**Email: [Tom.Littlepage@adeca.alabama.gov](mailto:Tom.Littlepage@adeca.alabama.gov)**

**Web: [www.water.alabama.gov](http://www.water.alabama.gov)**

**Phone: Toll Free 1-877-ALAWATER  
(1-877-252-9283) or (334) 242-5499**

**FAX: (334) 242-0776**